

2024

PERTAMINA GROUP

Country by Country Tax Report

(COUNTRY BY COUNTRY
INFORMATION ON PROFIT TAXES
IN 2022)



Table of Contents

I. Pembukaan Introduction	1
II. Struktur Organisasi Pertamina Group Organization Structure of Pertamina Group	4
III. Operasi Bisnis Pertamina Group Business Operations of Pertamina Group	5
IV. Strategi Pajak Our Tax Strategy	6
V. Data dan Digitalisasi Data and Digitalization	7
VI. Data Pajak Berdasarkan Laporan Per Negara Tax Data Based Country by Country Report (CbCR)	8
VI. i. Laporan Per Negara Country by Country Report	9
VI. ii. Kontribusi Pajak Berdasarkan Negara Tahun 2022 Tax Contribution by Country in 2022	12
VI. iii. Analisis Per Negara Analysis by Country	13
a. Analisis Pajak	a. Tax Overview
b. Data CbCR	b. CbCR Data
c. Aktivitas Bisnis	c. Business Activities



I. Pembukaan

Introduction

Seiring dengan transisi energi yang terus digaungkan dunia global, Pertamina yang memiliki bisnis inti energi berbasis fosil, mulai berbenah dengan cara mengembangkan sumber pendapatan lain selain energi berbasis fosil, yaitu energi baru dan terbarukan. Pertamina menggandeng mitra usaha baik nasional maupun global untuk mewujudkan program pemerintah dalam program dekarbonisasi, mempercepat pertumbuhan dan perkembangan EBT, dan mencapai target Net Zero Emission (NZE) tahun 2060 atau lebih cepat.

Komitmen tersebut dibuktikan dengan pertumbuhan di sektor ESG (*environmental, social, governance*) yang memiliki kinerja positif dengan meraih posisi nomor dua secara global dalam sub-industri Integrated Oil & Gas oleh Sustainalytics dengan skor ESG sebesar 22,1 (*Medium Risk*) di Oktober 2022, yang mengalami perbaikan dari tahun sebelumnya dengan skor 28,1 (*Medium Risk*).

Komitmen Pertamina untuk terus memperkuat praktik tata kelola diwujudkan melalui dukungan langsung kepada EITI (Extractive Industry Transparency Industry Initiative). EITI adalah standar global untuk tata kelola sumber daya minyak, gas, dan mineral yang baik yang berusaha mengatasi isu-isu tata kelola utama di sektor ekstraktif.

As the world continues to champion the energy transition, Pertamina, whose core business is fossil-based energy, is beginning to transform by developing other revenue sources beyond fossil-based energy, namely new and renewable energy. Pertamina is partnering with national and global business partners to realize the government's decarbonization program, accelerate the growth and development of renewable energy, and achieve the Net Zero Emission (NZE) target by 2060 or sooner.

This commitment is evidenced by the growth in the ESG (environmental, social, governance) sector, where Pertamina achieved a positive performance by securing the second position globally in the Integrated Oil & Gas sub-industry by Sustainalytics, with an ESG score of 22.1 (Medium Risk) in October 2022, an improvement from the previous year's score of 28.1 (Medium Risk).

Pertamina's commitment to continuously strengthen governance practices is demonstrated through direct support for the Extractive Industry Transparency Initiative (EITI). EITI is a global standard for good governance of oil, gas, and mineral resources, aiming to address key governance issues in the extractive sector.

Sejak Oktober 2022, Pertamina bergabung menjadi Perusahaan Pendukung EITI bersama dengan 21 perusahaan migas global serta 43 perusahaan global dari industri lainnya. Keterlibatan ini menandai tonggak sejarah Pertamina sebagai perusahaan migas pertama di Asia Tenggara yang mendukung EITI. Pertamina berkomitmen untuk memastikan kepatuhan terhadap semua persyaratan hukum yang ditetapkan, dan menjunjung tinggi standar praktik Tata Kelola Perusahaan yang Baik, termasuk akuntabilitas dan transparansi di seluruh area operasi perusahaan. Pertamina berkomitmen untuk mengungkapkan informasi dengan menerapkan standar internasional, termasuk Standar EITI di negara pelaksana EITI tempat mereka beroperasi

Sejalan dengan komitmen tersebut, Pertamina juga mengimplementasikan standar internasional dalam pelaporan pajak termasuk mengikuti rencana aksi BEPS yang menetapkan pedoman untuk dokumentasi transfer pricing dan pelaporan Per Negara. Rencana aksi BEPS yang terdiri 15 poin aksi, termasuk aksi 13 (Dokumentasi transfer pricing dan Pelaporan Per Negara) mengharuskan MNE untuk menyusun Laporan BEPS Country by Country Report (CbCR) yang menyajikan alokasi pendapatan, pajak, dan aktivitas bisnis kelompok MNE berdasarkan yurisdiksi pajak.

Since October 2022, Pertamina has joined as an EITI Supporting Company alongside 21 global oil and gas companies and 43 global companies from other industries. This involvement marks a milestone for Pertamina as Southeast Asia's first oil and gas company to support EITI. Pertamina is committed to ensuring compliance with all established legal requirements and upholding the highest standards of Good Corporate Governance practices, including accountability and transparency across all areas of the company's operations. Pertamina is dedicated to disclosing information by applying international standards, including the EITI Standard in EITI-implementing countries where they operate.

In line with this commitment, Pertamina also implements international standards in tax reporting, including adhering to the BEPS action plan, which sets guidelines for transfer pricing documentation and country-by-country reporting. The BEPS action plan consists of 15 action points, including Action 13 (Transfer Pricing Documentation and Country-by-Country Reporting), which requires MNEs to prepare a BEPS Country-by-Country Report (CbCR) that presents the allocation of income, taxes, and business activities of the MNE group based on tax jurisdictions.

CbCR adalah salah satu dokumen transfer pricing yang berisi mengenai alokasi penghasilan, pajak yang dibayar, dan aktivitas usaha dari seluruh anggota grup usaha yang disajikan dalam tabulasi khusus sesuai dengan standar internasional dan akan dipertukarkan dengan otoritas pajak negara lain sesuai perjanjian internasional. Dengan CbCR memungkinkan otoritas pajak untuk melakukan penilaian risiko terkait transfer pricing di setiap yurisdiksi pajak tempat aktivitas bisnis beroperasi.

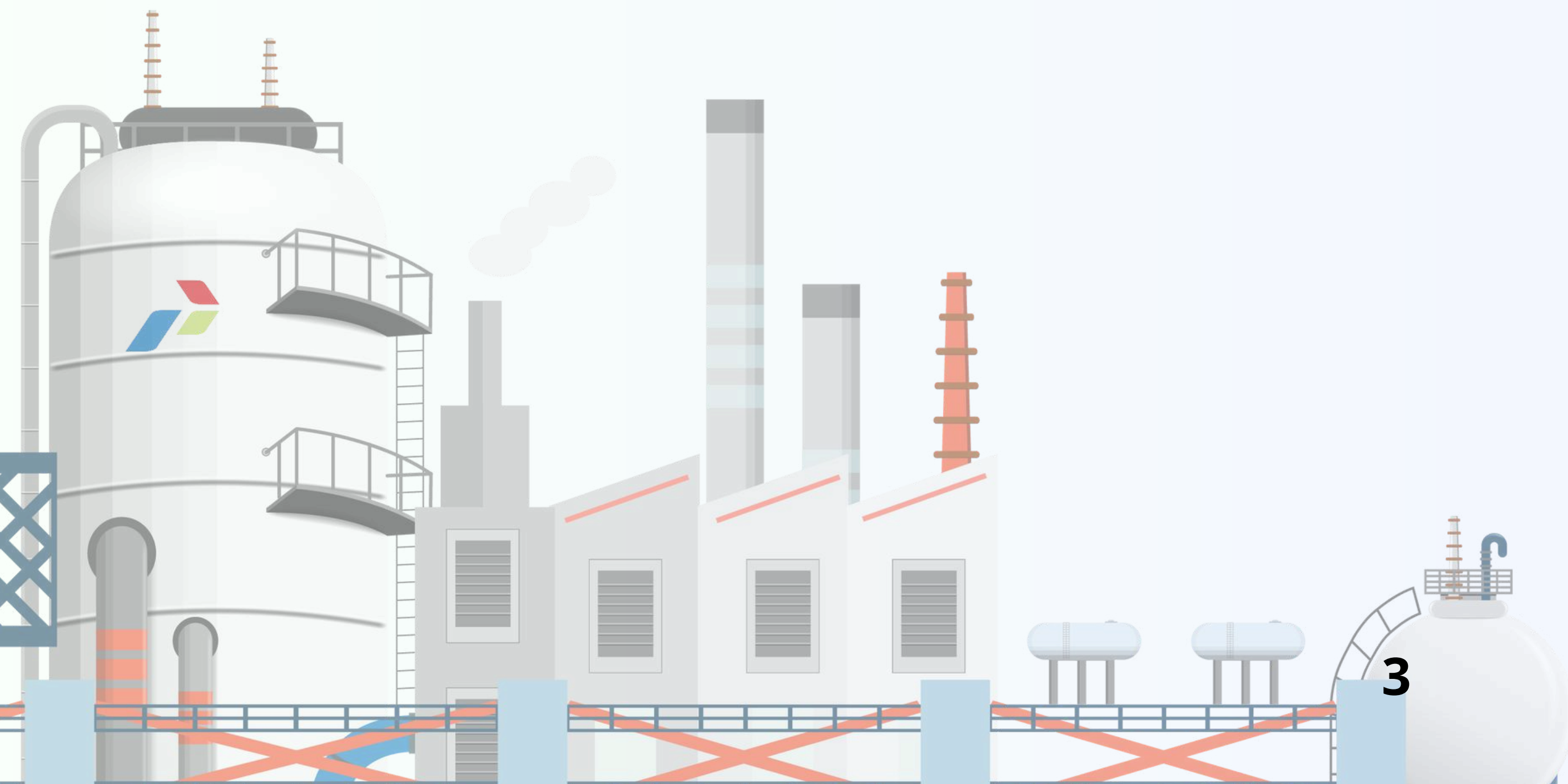
Berdasarkan pedoman OECD terkait implementasi BEPS Action 13 (Guidance on the Implementation of Country-by-Country Reporting) batas pelaporan CbCR ke otoritas pajak paling lambat 12 bulan setelah akhir tahun pajak.

Di Indonesia, sesuai dengan Peraturan Menteri Keuangan Nomor 172 Tahun 2023, Pertamina wajib menyampaikan notifikasi CbCR ke Direktorat Jenderal pajak (DJP) paling lambat 12 bulan setelah akhir tahun pajak. Untuk notifikasi CbCR tahun 2023 paling lambat disampaikan 31 Desember 2024. Sampai dengan *tax disclosure* ini dibuat, notifikasi CbCR 2023 belum disampaikan kepada DJP. Oleh karena itu, *tax disclosure* yang diterbitkan tahun 2024 ini menggunakan data CbCR 2022 yang telah dilaporkan kepada DJP tanggal 28 Desember 2023 .

The CbCR is a transfer pricing document that contains information on the allocation of income, taxes paid, and business activities of all group members, presented in a specific tabulation according to international standards and exchanged with other countries' tax authorities in accordance with international agreements. The CbCR enables tax authorities to conduct risk assessments related to transfer pricing in each tax jurisdiction where business activities operate.

Based on the OECD guidelines related to the implementation of BEPS Action 13 (Guidance on the Implementation of Country-by-Country Reporting), the reporting limit of CbCR to the tax authority is no later than 12 months after the end of the tax year.

In Indonesia, according to Minister of Finance Regulation Number 172 of 2023, Pertamina must submit a CbCR notification to the Directorate General of Taxes (DJP) 12 months after the end of the tax year. The latest submission date for the 2023 CbCR notification is December 31, 2024. As for preparing this tax disclosure, the 2023 CbCR notification still needs to be submitted to the DJT. Therefore, the tax disclosure published in 2024 uses the 2022 CbCR data, which was reported to the DJP on December 28, 2023.



II. Struktur Organisasi Pertamina Group Organization Structure of Pertamina Group

Pertamina memiliki peran strategis dalam menyediakan energi yang sangat dibutuhkan untuk menggerakkan seluruh sendi-sendi kehidupan di Indonesia. Atas peran dan tanggung jawab tersebut, pasca-restrukturisasi dan pembentukan subholding, PERTAMINA memiliki 12 anak usaha, yang terintegrasi dari hulu hingga hilir. Anak usaha PERTAMINA dibagi ke dalam enam subholding dan enam anak usaha jasa/portofolio.

Pertamina plays a strategic role in providing the essential energy needed to power all aspects of life in Indonesia. Due to this role and responsibility, following restructuring and the formation of sub holdings, Pertamina now has 12 subsidiaries that are integrated from upstream to downstream. Pertamina's subsidiaries are divided into six subholdings and six service/portfolio subsidiaries.

Subholding di bawah Pertamina, yaitu:

1. Subholding Upstream;
2. Subholding Gas;
3. Subholding Refinery and Petrochemical;
4. Subholding New & Renewable Energy (N&RE);
5. Subholding Commercial and Trading; dan
6. Subholding Integrated Marine Logistics.

The subholdings under Pertamina are:

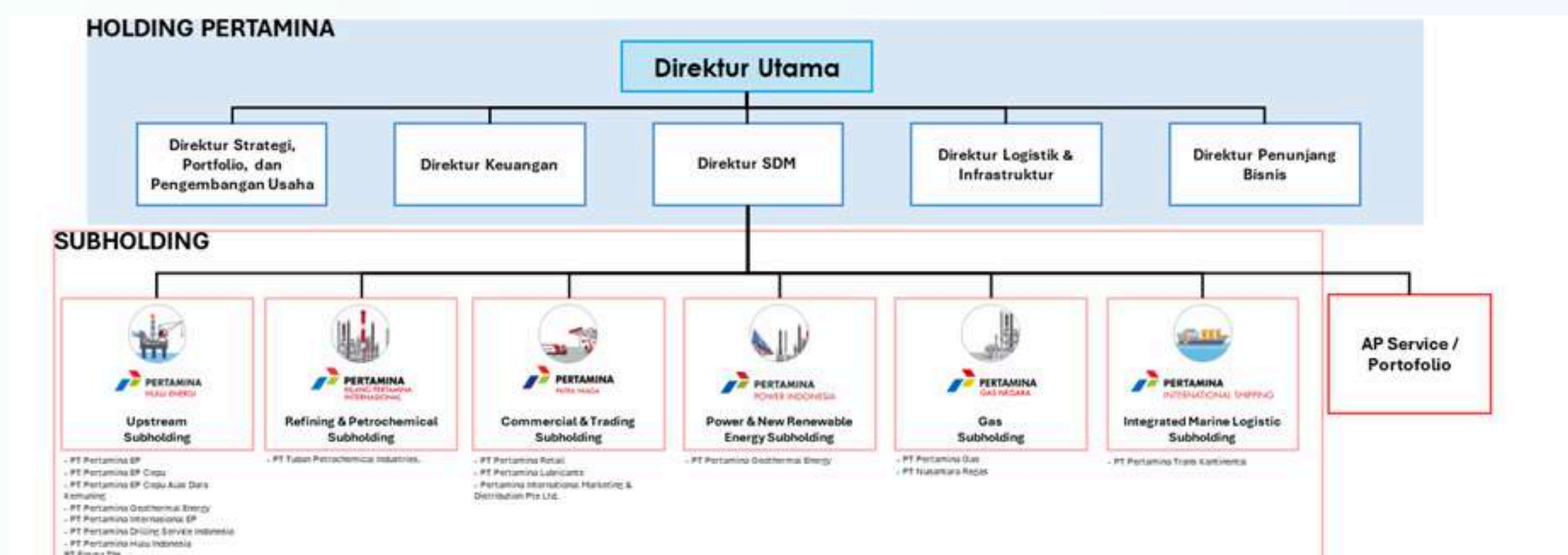
1. Upstream Subholding,
2. Gas Subholding,
3. Refinery and Petrochemical Subholding,
4. Subholding New & Renewable Energy (N&RE),
5. Commercial and Trading Subholding, and
6. Integrated Marine Logistics Subholding.

Adapun enam anak usaha jasa/portofolio sebagai berikut:

1. PT Asuransi Tugu Pratama Indonesia Tbk;
2. PT Patra Jasa;
3. PT Pelita Air Service;
4. PT Pertamina Bina Medika IHC;
5. PT Pertamina Training & Consulting; dan
6. PT Pertamina Pedeve Indonesia.

The six service/portfolio subsidiaries are as follows:

1. PT Asuransi Tugu Pratama Indonesia Tbk;
2. PT Patra Jasa;
3. PT Pelita Air Service;
4. PT Pertamina Bina Medika IHC;
5. PT Pertamina Training & Consulting; and
6. PT Pertamina Pedeve Indonesia.

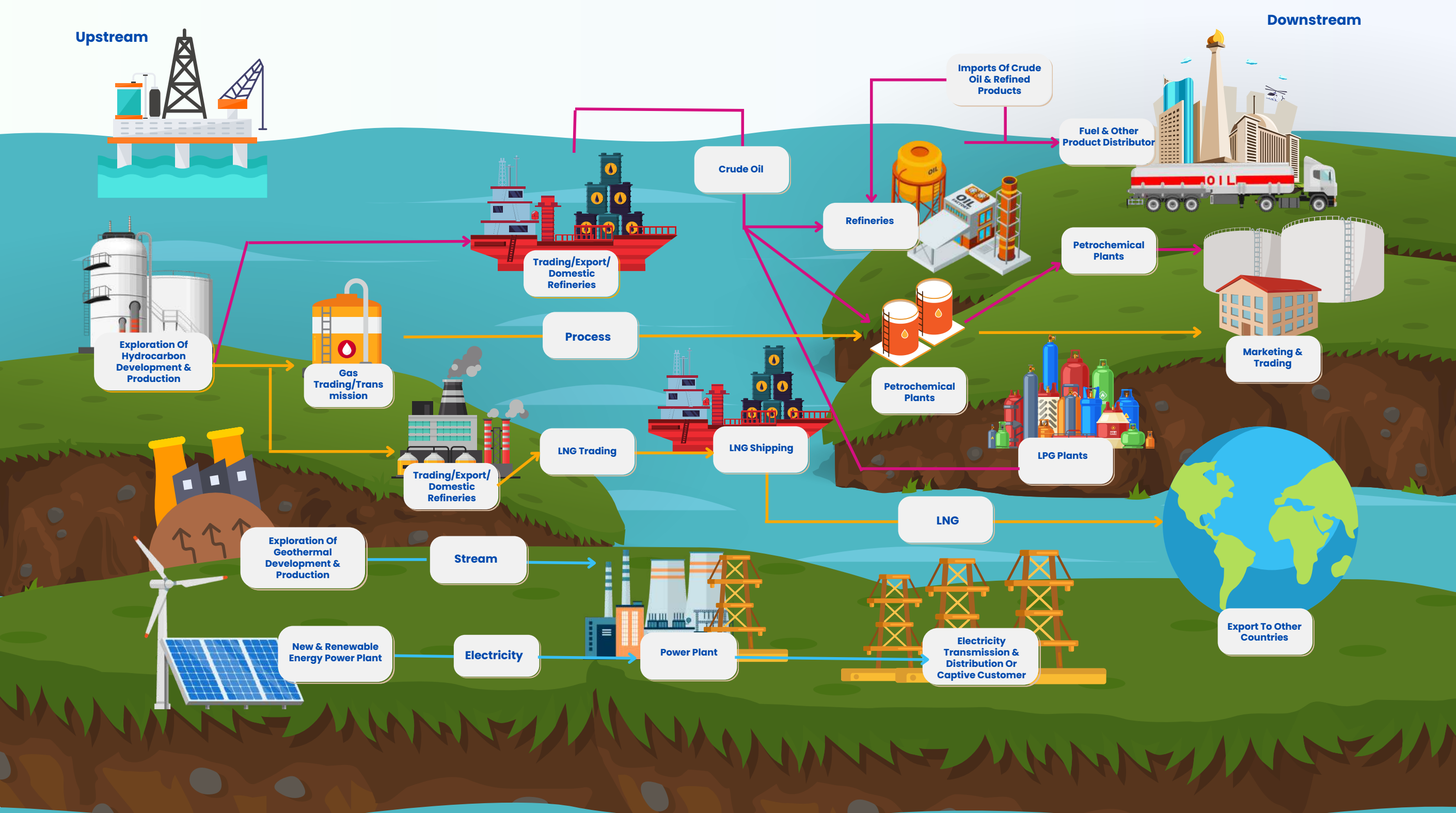


III. Operasi Bisnis Pertamina Group

Business Operation of Pertamina Group

Sesuai Akta No. 22 tanggal 11 Agustus 2023, Perseroan melalui Entitas Anak dapat melaksanakan kegiatan usaha utama dan kegiatan usaha dalam rangka optimalisasi pemanfaatan sumber daya yang dimiliki. Pertamina menerima mandat dari Pemerintah terkait penugasan kewajiban pelayanan publik (public service obligation) dalam penyediaan BBM tertentu. Dalam menjalankan kegiatan operasinya, Perseroan memiliki relasi bisnis dalam bentuk 6 (enam) joint venture dan kerja sama pengelolaan hulu migas. Pengungkapan informasi tentang produk, layanan dan kegiatan usaha, serta bentuk relasi bisnis yang dijalankan dapat dilihat dalam Laporan Tahunan PT Pertamina (Persero) 2023.

By Deed No. 22, dated August 11, 2023, the Company, through its Subsidiaries, may carry out main business activities and activities aimed at optimizing the utilization of its resources. Pertamina receives an authorization from the Government related to the Public Service Obligation (PSO) in providing certain fuels. In conducting its operations, the Company has business relationships through six joint ventures and upstream oil and gas management collaborations. Disclosure of information about products, services & business activities, and the types of business relationships undertaken can be found in the 2023 Annual Report of PT Pertamina (Persero).



IV. Strategi Pajak

Tax Strategy

Pertamina mengimplementasikan *Tax Control Framework* (TCF) sebagai sistem pengelolaan perpajakan untuk mempermudah monitoring dan evaluasi pengelolaan perpajakan serta mitigasi risiko perpajakan baik di level Subholding maupun Anak Perusahaan dan afiliasinya. Dalam sistem TCF yang diimplementasikan Pertamina mencakup delapan aspek sebagai berikut:

1. Struktur Organisasi Pajak

Menentukan struktur organisasi fungsi pajak perusahaan beserta tugas pokok dan fungsinya yang dapat menciptakan *internal control* yang efektif.

2. Pengelolaan Risiko Perpajakan

Melakukan *risk assessment* atas pengelolaan perpajakan perusahaan secara periodik.

3. Perencanaan Perpajakan

Penyusun perencanaan pajak yang efektif.

4. Akuntansi Pajak dan Pelaporan

Menyelenggarakan pengelolaan pencatatan dan pelaporan transaksi terkait perpajakan sesuai PSAK dan ketentuan perpajakan yang berlaku.

5. Kepatuhan Pajak

Memastikan kepatuhan pemenuhan kewajiban perpajakan

6. Koordinasi dan Komunikasi

Melakukan koordinasi dan komunikasi dengan stakeholder

7. Teknologi Informasi

Penggunaan sistem teknologi informasi dalam proses perpajakan

8. Pelatihan

Meningkatkan kompetensi pekerja melalui pelatihan perpajakan

Pertamina implements a *Tax Control Framework* (TCF) as a tax management system to facilitate monitoring and evaluation of tax management and tax risk mitigation at both the Subholding and Subsidiary and affiliate levels. The TCF system implemented by Pertamina encompasses the following eight aspects:

1. Tax Organization

Determining the organizational structure of the company's tax function and its main tasks and functions that can create effective internal control.

2. Task Risk Management

Conducting periodic risk assessments on the company's tax management.

3. Tax Planning

Developing effective tax planning.

4. Tax Accounting and Reporting:

Managing the recording and reporting of tax-related transactions by PSAK and applicable tax regulations.

5. Tax Compliance

Ensuring compliance with tax obligations.

6. Coordination and Communication

Coordinating and communicating with stakeholders.

7. Information Technology

Utilizing information technology systems in the taxation process.

8. Training

Enhancing employee competence through tax training.

V. Data dan Digitalisasi

Data and Digitalization

Komitmen PT Pertamina (Persero) untuk menjadi global energy champion dibuktikan dalam pengembangan inovasi dengan menghadirkan Pertamina Integrated Enterprise Data and Command Center (PIEDCC). Inovasi berbasis digital ini menyajikan data secara *realtime* yang akan mendukung peran strategi Pertamina sebagai integrator seluruh lini bisnis dari aspek operasional dan komersial. Digitalisasi di bidang perpajakan Pertamina menggunakan *Big Data Tax* dalam rangka mencapai Integrasi data perpajakan *end-to-end* melalui:

1. G/L Tax Mapping;
2. Equalization;
3. Reconciliation;
4. Pre-populated SPT; dan
5. Tax strategy analytic (Operasional Transfer Pricing dan Global ETR (BEPS Pilar 2)

Dengan diterapkannya digitalisasi di Pertamina Group akan mendorong ekualisasi pajak - komersial dan rekonsiliasi fiskal, analytical dashboard untuk monitoring dan Evaluasi Tax Strategy, single source of truth untuk dokumen pendukung perpajakan yang handal, single platform perpajakan di Pertamina Group dan membuat data menjadi lebih koheren, mendalam secara visual, dan interaktif sehingga dapat lebih efisien, optimal dan transparansi dalam menjalankan proses bisnis terutama di bidang perpajakan Pertamina Group.

PT Pertamina (Persero)'s commitment to becoming a global energy champion is evidenced by the development of innovation by introducing the Pertamina Integrated Enterprise Data Command Center (PIEDCC). This digital-based innovation provides real-time data to support Pertamina's strategic role as an integrator across all business lines, from operational to commercial. The digitalization in Pertamina's tax also utilizes Big Data Tax to achieve end-to-end tax data integration through:

1. G/L Tax Mapping;
2. Equalization;
3. Reconciliation;
4. Pre-populated SPT; dan
5. Tax strategy analytic (Operasional Transfer Pricing dan Global ETR (BEPS Pilar 2)

The implementation of digitalization in Pertamina Group will drive the equalization of commercial - tax and fiscal reconciliation, an analytical dashboard for monitoring and evaluating tax strategy, a single source of truth for reliable tax supporting documents, a single tax platform in Pertamina Group, and make the data more coherent, visually in-depth, and interactive, thereby enabling more efficient, optimal, and transparent business processes, especially in the taxation sector of Pertamina Group.

VI. Data Pajak Berdasarkan Laporan Per Negara

Tax Data Based on Country by Country Report (CbCR)

1. Sumber Data CbCR

Sumber data CbCR berdasarkan data pembayaran Pajak setiap entitas Pertamina group selama satu tahun pajak kepada pemerintah berdasarkan undang-undang atau peraturan turunannya.

2. Periode Pelaporan Data CbCR

Periode pelaporan CbCR mencakup satu tahun pajak yang wajib dilaporkan paling lambat 12 bulan setelah akhir tahun pajak.

1. Data Source of CbCR

Tax payment data for each Pertamina Group entity for a tax year to the government based on laws or derivative regulations.

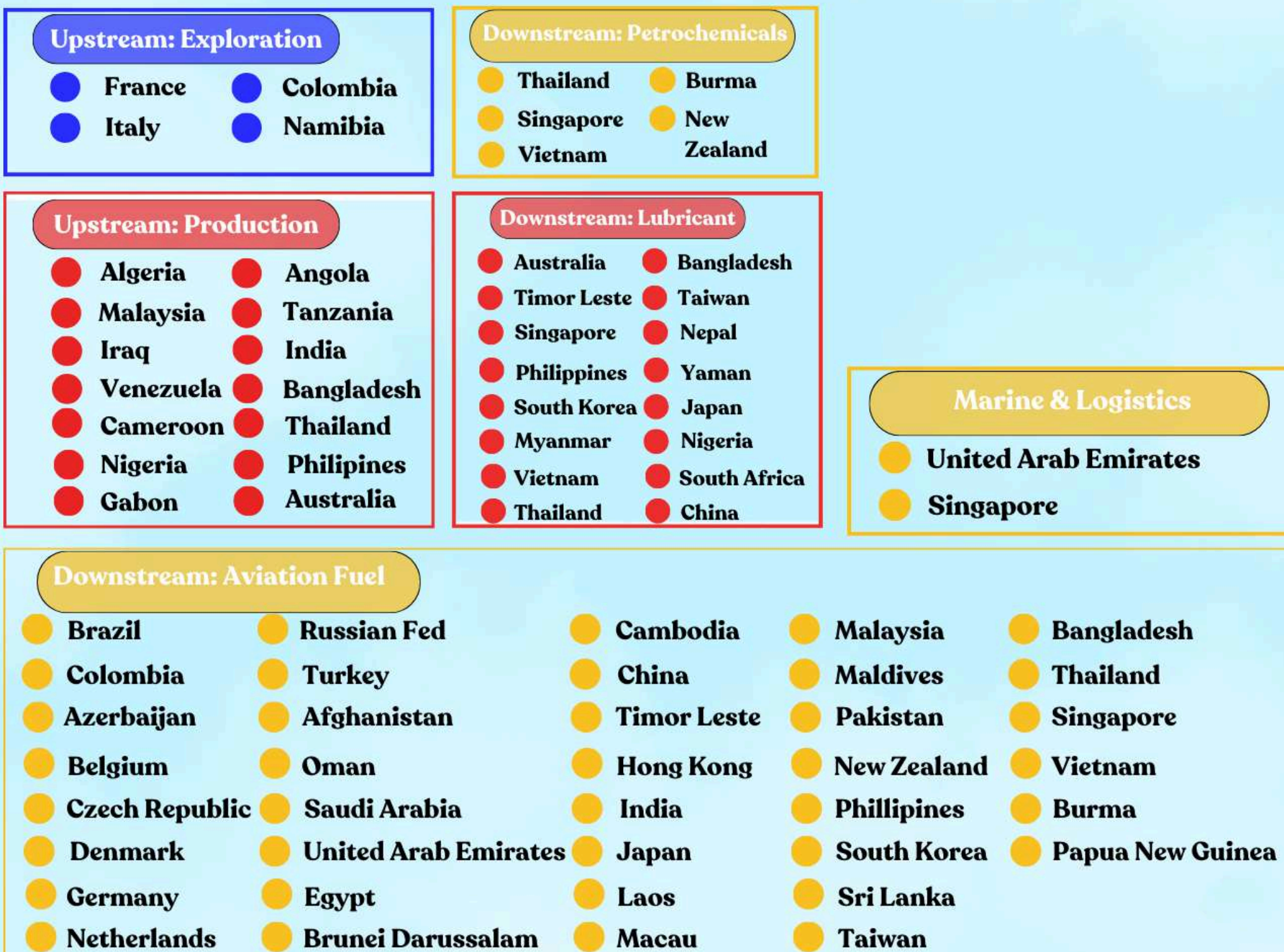
2. CbCR Data Reporting Period

The CbCR reporting period covers one tax year, which must be reported 12 months after the end of the tax year.



Aktivitas Bisnis Grup Pertamina di Dunia

Business Activities of Pertamina Group in The World



VI. i. Laporan Per Negara

Country by Country Report

Penyajian data CbCR PT Pertamina (Persero) mengacu pada PMK 172 Tahun 2023 tentang penerapan prinsip kewajaran dan kelaziman usaha dalam transaksi yang dipengaruhi hubungan istimewa. Data laporan Per Negara terdiri dari alokasi penghasilan, pajak dibayar, dan aktivitas usaha per negara atau yurisdiksi. Rincian laporan CbCR dijelaskan dalam komponen berikut:

1. Negara

Pada bagian ini akan menjelaskan secara detail mengenai negara yang terdaftar menjadi anggota Grup Usaha (tax resident). Untuk negara dari Grup Usaha yang berdomisili di satu atau lebih negara atau yurisdiksi tertentu namun bukan merupakan tax resident di negara atau yurisdiksi tersebut, anggota dari Grup Usaha tersebut digabungkan dalam golongan "NON-TAX RESIDENT".

2. Penghasilan Bruto

Penghasilan bruto dalam laporan Country by Country terdiri dari:

- Penghasilan dari pihak independen;
- Penghasilan dari pihak afiliasi;
- Total penghasilan bruto

Dalam perhitungan penghasilan bruto terdiri dari penghasilan kegiatan penjualan persediaan dan properti, jasa, royalti, bunga, premium, dan penghasilan lainnya. Sedangkan dividen di negara atau yurisdiksi pembayar tidak termasuk dalam perhitungan penghasilan bruto.

3. Laba (Rugi) sebelum Pajak

Penghitungan laba (rugi) sebelum pajak merupakan semua pos pendapatan dan beban luar biasa dengan jumlah rupiah dari anggota Grup Usaha pada negara atau yurisdiksi yang relevan.

The presentation of PT Pertamina (Persero) CbCR data refers to PMK 172 of 2023 concerning applying the principles of fairness and business custom in transactions influenced by unique relationships. In PMK 172 of 2023, a country-by-country report comprises income allocation, taxes paid, and business activities per country or jurisdiction. Details of the CbCR report are described in the following components:

1. Jurisdiction

This section will provide detailed explanations about countries registered as Business Group members (tax residents). For countries within the Business Group domiciled in one or more specific countries or jurisdictions yet not considered tax residents in those countries or jurisdictions, those members of the Business Group are classified under the category 'NON-TAX RESIDENT.'

2. Revenues - Total

The gross income in the Country-by-Country report consists of:

- Income from independent parties;
- Income from affiliated parties;
- Total gross income.

The gross income calculation includes selling inventory and property, services, royalties, interest, premiums, and other incomes. However, dividends in the country or jurisdiction of the payer are not included in the gross income calculation.

3. Profit (Loss) Before Income Tax

The profit (loss) calculation before tax includes all income items and extraordinary expenses in Indonesian Rupiah from Business Group members in the relevant country or jurisdiction.

4. PPh yang telah Dipotong/ Dipungut / Dibayar Sendiri

Pajak Penghasilan (PPh) merupakan semua pajak penghasilan yang telah dipotong / dipungut / dibayar sendiri oleh semua anggota dari Grup Usaha pada negara atau yurisdiksi yang relevan dan berbentuk dalam jumlah rupiah. Anggota Grup Usaha baik kepada residen di negara atau yurisdiksi yang melakukan pembayaran pajak termasuk dalam penghitungan PPh yang telah dipotong / dipungut / dibayar sendiri.

5. PPh Terutang

PPh terutang berbentuk dalam jumlah rupiah yang dilaporkan pada laporan laba (rugi) tahun pajak berjalan dari semua anggota Grup Usaha pada negara atau yurisdiksi yang relevan. Jumlah pajak penghasilan yang terutang hanya mencerminkan operasi di tahun berjalan dan tidak termasuk pajak tangguhan.

6. Modal

Modal tercatat (*stated capital*) harus berbentuk dalam jumlah rupiah dari semua anggota Grup Usaha negara atau yurisdiksi yang relevan. Untuk Bentuk Usaha Tetap (BUT), jumlah modal yang tercatat harus dilaporkan oleh kantor pusat Bentuk Usaha Tetap (BUT) tersebut, kecuali negara atau yurisdiksi di mana Bentuk Usaha Tetap (BUT) tersebut berada mensyaratkan adanya modal tertentu untuk Bentuk Usaha Tetap (BUT).

7. Akumulasi Laba Ditahan

Dalam hal bentuk usaha tetap, jumlah akumulasi laba ditahan harus dilaporkan oleh kantor pusat bentuk usaha tetap tersebut dan jumlah laba harus berbentuk rupiah dari semua anggota dari Grup Usaha pada negara atau yurisdiksi yang relevan.

4. Income Tax Paid (On a Cash Basis)

Income Tax is all income tax that has been withheld / collected / self-paid by all members of the Business Group in the relevant country or jurisdiction and is denominated in Indonesian Rupiah. Members of the Business Group, whether paying tax to residents of the country or jurisdiction, are included in the calculation of withheld / collected / self-paid income tax.

5. Income Tax Accrued-Current Year

Income tax payable is reported in rupiah amounts on the profit and loss statement for the current tax year of all group members in the relevant country or jurisdiction. The amount of income tax payable only reflects operations in the current year and does not include deferred taxes.

6. Stated Capital

The stated capital must be in Indonesian Rupiah amounts from all members of the Business Group in the relevant country or jurisdiction. For permanent establishments, the amount of stated capital must be reported by the head office of the permanent establishment, except where the jurisdiction of the permanent establishment requires a specific capital amount.

7. Accumulated Earnings

In the case of permanent establishments, the accumulated retained earnings must be reported by the head office of the permanent establishment, and the profit amount must be in Indonesian Rupiah from all members of the Business Group in the relevant country or jurisdiction.

8. Jumlah Pegawai Tetap

Keseluruhan jumlah pegawai tetap wajib dilaporkan berdasarkan kondisi pada akhir tahun, atas dasar tingkat pengupahan rata-rata untuk tahun tersebut, ataupun menggunakan metode lain yang konsisten diterapkan antar negara atau yurisdiksi dari tahun ke tahun. Dengan demikian, kontraktor independen yang berpartisipasi dalam kegiatan operasi anggota dari Grup Usaha dapat dilaporkan sebagai pegawai.

9. Harta Berwujud Selain Kas dan Setara Kas

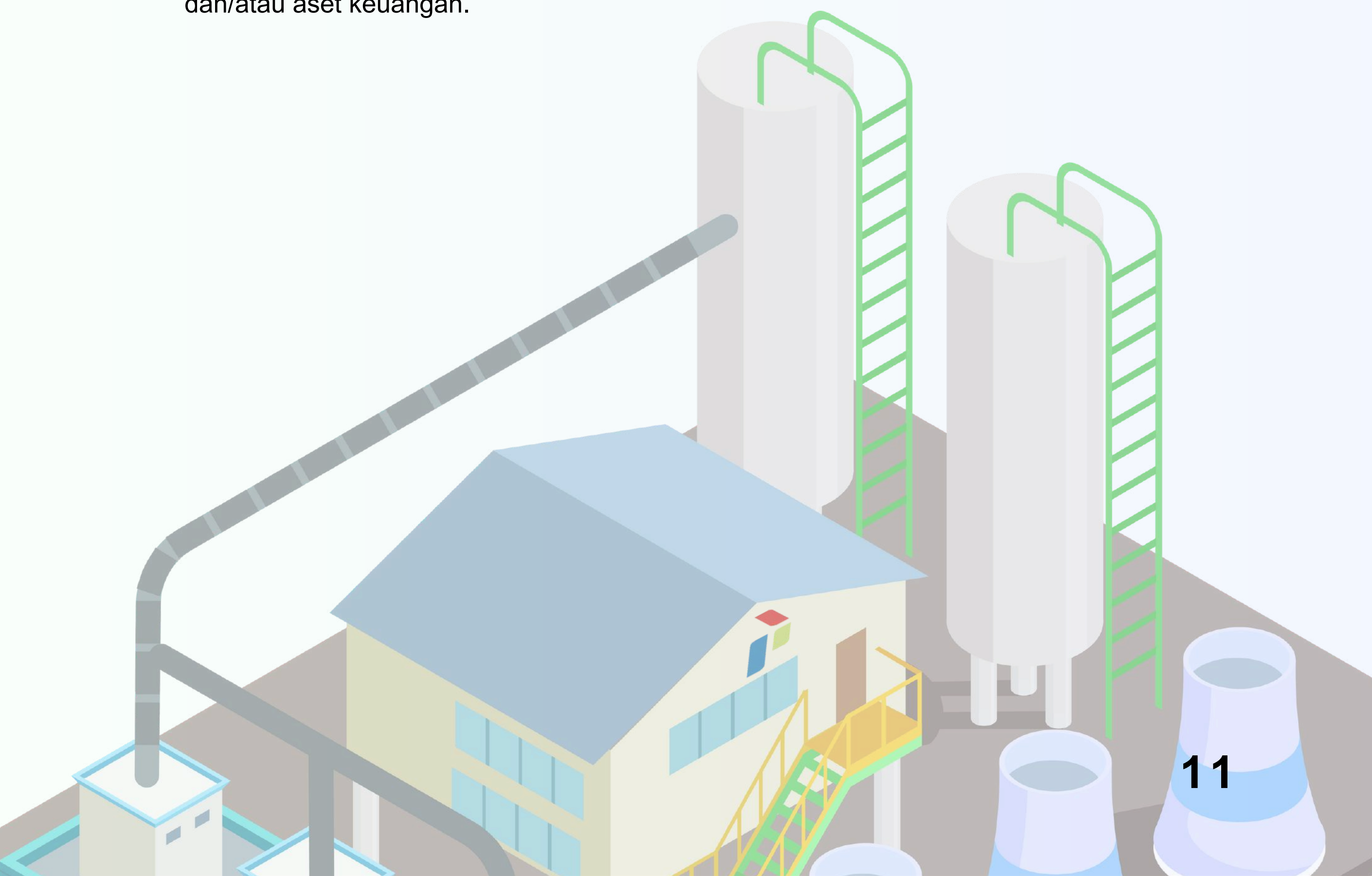
Untuk harta berwujud selain kas dan setara kas semua anggota dari Grup Usaha pada negara atau yurisdiksi yang relevan disatukan dalam buku bersih dari seluruh harta berwujud. Terkait Bentuk Usaha Tetap (BUT), jumlah nilai buku bersih dari seluruh harta berwujud harus dilaporkan di negara atau yurisdiksi Bentuk Usaha Tetap (BUT) tersebut berada. Tidak termasuk dalam penghitungan harta berwujud pada kolom ini adalah kas dan setara kas, harta tidak berwujud, dan/atau aset keuangan.

8. Number Of Employees

The total number of permanent employees must be reported based on the conditions at year-end, using either the average wage rate for the year or another method consistently applied across countries or jurisdictions from year to year. Thus, independent contractors participating in the operations of Business Group members can be reported as employees.

9. Tangible Assets Other Than Cash and Cash Equivalents

For tangible assets other than cash and cash equivalents, all members of the Business Group in the relevant country or jurisdiction consolidate these assets on a net basis. Regarding permanent establishments, the net book value of all tangible assets must be reported in the country or jurisdiction where the permanent establishment is located. Excluded from the calculation of tangible assets in this column are cash and cash equivalents, intangible assets, and/or financial assets.





VI. ii. Kontribusi Pajak Berdasarkan Negara Tahun 2022 Tax Contribution by Country in 2022

Kontribusi pajak di setiap yurisdiksi dibawah Pertamina Group mencerminkan total pembayaran Pajak yang mencakup Pajak Penghasilan Badan, Pajak Pertambahan Nilai, pajak lainnya, dan pajak yang dipotong atau dipungut. Informasi ini memberikan transparansi mengenai kontribusi finansial perusahaan terhadap pendapatan negara di setiap yurisdiksi, membantu otoritas pajak dan pemangku kepentingan lainnya dalam memahami dampak ekonomi perusahaan tersebut secara global.

The tax contribution in each jurisdiction under the Pertamina Group reflects the total tax payments, which include Corporate Income Tax, Value Added Tax, other taxes, and taxes withheld or collected. This information provides transparency regarding the company's financial contribution to national revenue in each jurisdiction, supporting tax authorities and other stakeholders in understanding the company's economic impact globally.



VI. iii. Analisis Per Negara

Analysis by Country

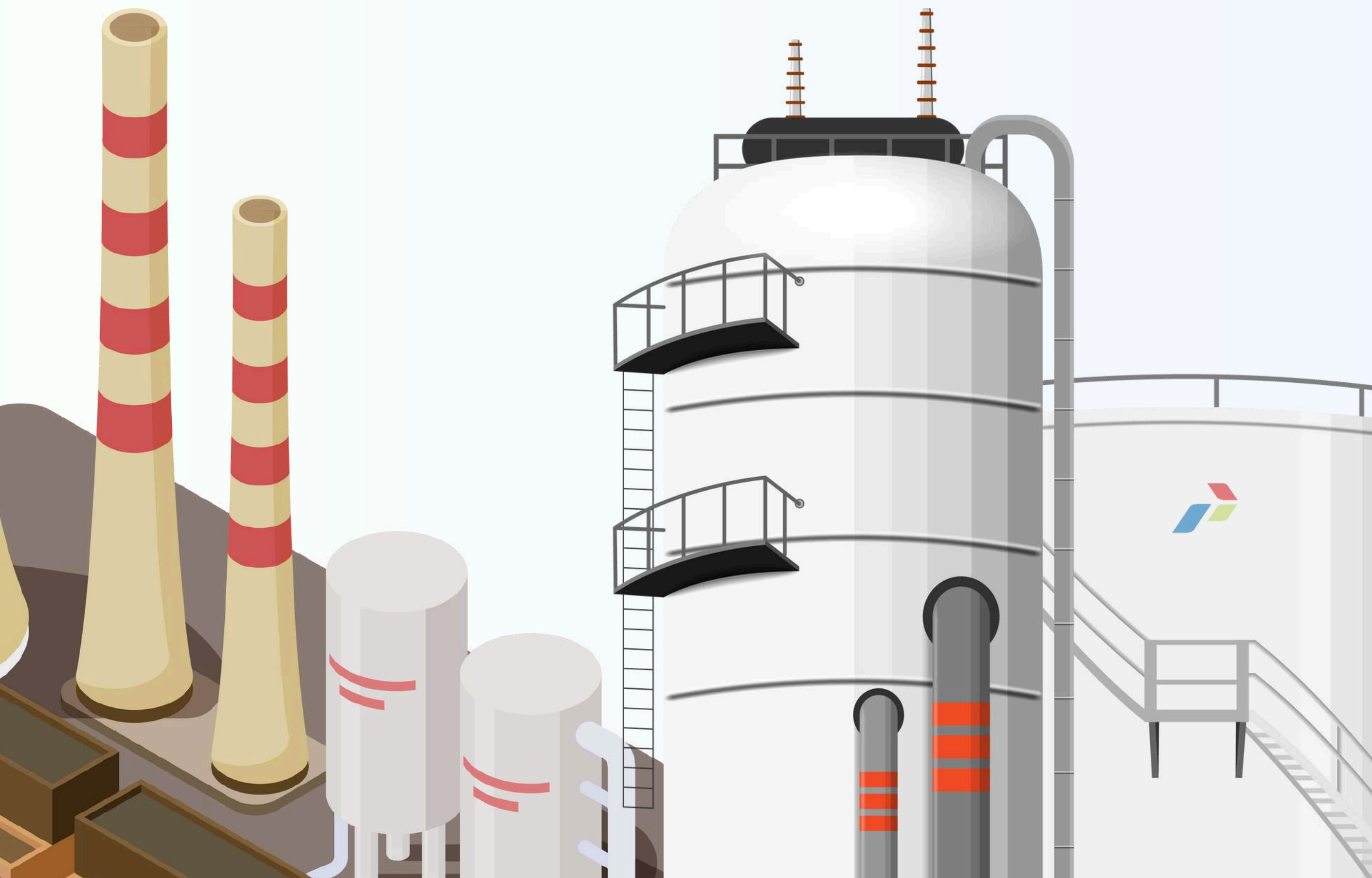
- | | |
|---------------------|------------------------|
| a. Ikhtisar Pajak | a. Tax Overview |
| b. Data CbCR | b. CbCR Data |
| c. Aktivitas Bisnis | c. Business Activities |

Daftar Negara:

1. Indonesia
2. Singapura
3. Timor Leste
4. Hongkong
5. Jepang
6. Prancis
7. Belanda
8. Gabon
9. Libya
10. Amerika Serikat
11. Virgin Island (British)

List of Countries:

1. Indonesia
2. Singapore
3. Timor-Leste
4. Hongkong
5. Japan
6. France
7. Netherlands
8. Gabon
9. Libya
10. United States
11. Virgin Island (British)



Data Pertamina Group

Pertamina Group Summary

Data dalam ratusan juta dollar
Data in hundred million dollar

Jurisdiction	Revenues - Unrelated Party	Revenues - Related Party	Revenues - Total	Profit (Loss) before Income Tax	Income Tax Paid (on a cash basis)	Income Tax Accrued - Current Year	Stated Capital	Accumulated Earnings	Number of Employees (Number)	Tangible Assets other than Cash and Cash Equivalents
Prancis	499,665.56	-	499,665.56	164,630.27	79,358.04	-	223,397.73	366,312.12	595	1,490,942.77
Indonesia	221,596,649.31	207,735,349.60	431,802,420.54	76,742,107.92	4,193,801.92	8,773,371.05	151,816,697.93	339,169,931.19	50,820	769,775,157.39
Gabon	276,262.99	-	276,262.99	98,427.31	24,262.22	-	27,469.51	(106,843.13)	286	414,774.58
Hongkong	13,475.68	5,342.65	18,818.33	(16,885.05)	-	-	103,955.25	16,456.31	-	162,105.67
Jepang	-	-	259.91	5,605.32	-	40.23	1,000.00	5,544.44	12	1,804.07
Libya	-	-	-	-	-	-	0.10	114,150.24	-	-
Belanda	91,548.35	-	243,290.35	101,665.27	8,087.41	-	21,072.35	171,480.36	-	238,236.03
Singapura	4,620,368.97	685,875.84	5,306,244.81	(50,525.68)	2,900.37	-	29,037.78	(72,667.80)	34	259,094.84
Timor leste	75,031.29	2,285.92	77,317.20	12,822.23	352.65	678.08	2,007.89	43,158.50	19	5,611.37
Amerika Serikat	57,945.21	-	57,945.21	48,344.88	4,771.68	-	-	64,794.66	-	167,877.86
Virgin Island (British)	27,806.95	-	27,806.95	5,919.06	-	-	52,307.20	(21,564.93)	-	5,884.54
Total	227,258,754.30	208,428,854.01	438,310,031.86	77,112,111.54	4,313,534.29	8,774,089.35	152,276,945.73	339,750,751.97	51,766	772,521,489.10

Kurs Neraca: 12.441
per 1 Januari 2015

Berdasarkan Lampiran Peraturan Direktorat Jenderal Pajak Nomor 29/PJ/2017 tentang Tata Cara Pengelolaan Laporan Per Negara

Exchange Rate: 12,441
as of January 1, 2015

According to the Appendix of the Directorate General of Taxes Regulation Number 29/PJ/2017 concerning the Procedures for Managing Country Reports

VI. iii. Analisis Per Negara

Analysis by Country

1. Indonesia

a. Ikhtisar Pajak

Pemerintah Indonesia telah menetapkan tonggak sejarah baru terkait reformasi perpajakan melalui Undang-Undang Harmonisasi Peraturan Perpajakan (UU HPP). Pemerintah Indonesia juga menerapkan kebijakan fiskal melalui pemberian insentif fiskal seperti *tax holiday*, *tax allowance*, dan fasilitas PPN.

Sistem perpajakan di Indonesia menganut *World Wide Income* dan tiga jenis sistem pemungutan pajak yaitu

1. Self assessment system
2. Official assessment system
3. Withholding assessment system

1. Indonesia

a. Tax Overview

The Indonesian government has established a new milestone in tax reform through the Harmonization of Tax Regulations Act (UU HPP). The Indonesian government has also implemented fiscal policies by providing fiscal incentives such as tax holidays, tax allowances, and VAT facilities.

The tax system in Indonesia adheres to the World Wide Income principle and includes three types of tax collection systems:

1. Self-assessment system
2. Official assessment system
3. Withholding assessment system

Pertamina merupakan BUMN terbesar di Indonesia yang beroperasi dalam sektor energi, dan berkontribusi signifikan dalam perekonomian nasional. antara lain melalui pembayaran pajak. Kepatuhan terhadap kewajiban perpajakan dan pengelolaan pajak yang efektif sangat penting untuk memastikan bahwa Pertamina dapat terus mendukung pembangunan nasional dan memberikan kontribusi positif terhadap ekonomi Indonesia.

Pertamina is the largest state-owned enterprise in Indonesia, operating in the energy sector, and makes a significant contribution to the national economy through tax payments. Compliance with tax obligations and effective tax management are crucial to ensure that Pertamina can continue supporting national development and positively contributing to the Indonesian economy.



b. Data CbCR Indonesia Desember Tahun 2022 (1/8)
The CbCR Data of Indonesia in December 2022 (1/8)

Data dalam ratusan juta dollar
Data in hundred million dollar

Name	Revenues - Unrelated Party	Revenues - Related Party	Revenues - Total	Profit (Loss) before Income Tax	Income Tax Paid (on a cash basis)	Income Tax Accrued - Current Year	Stated Capital	Accumulated Earnings	Number of Employees (number)	Tangible Assets other than Cash and Cash Equivalents
Indonesia	221,596,649.31	207,735,349.60	431,802,420.54	76,742,107.92	4,193,801.92	8,773,371.05	151,816,697.93	339,169,931.19	50,820	769,775,157.39
Entities di Indonesia										
KSO Einusa - RAGA	7,823.34	-	7,823.34	-	-	-	-	3,497.12	-	-
PEP Cepu ADK - Blok Alas Dara Kemuning	-	-	8,794.94	-	-	500.10	-	-	-	-
PHE Ambalat Ltd.- Blok Ambalat	-	-	-	-	-	-	12.00	318.86	-	-
PHE Bukat Ltd – Blok Bukat	-	-	-	-	-	-	202,137.07	202,137.07	-	-
PHE Nunukan Company- Blok Nunukan	-	-	-	(25,486.04)	-	-	82,184.77	223,816.06	-	25,613.80
PHE Offshore North West Java Llc. - Blok Offshore Northwest Java	-	-	-	653.06	-	-	10.00	(187,685.07)	-	-
PHE Oil and Gas B.V - Blok A (Natuna Sea)	-	(70,556.78)	(70,556.78)	(29,787.42)	14,653.35	14,653.35	(50.00)	73,195.27	-	1,956,997.36
PGAS Telecommunications International Pte. Ltd.	7,529.70	1,579.32	9,109.02	828.85	-	104.13	7.48	1,767.04	2	632.58
PT Alor Bahtera Laju Abadi	-	5,075.38	5,075.38	603.63	-	-	25,143.35	1,987.22	-	32,039.18
PT Ararkula Bahtera Laju Abadi	-	4,811.94	4,811.94	(217.92)	-	-	23,726.60	450.21	-	30,565.07
PT Aru Bahtera Laju Abadi	-	5,158.91	5,158.91	330.36	-	-	26,152.58	1,316.96	-	32,266.85
PT Asuransi Samsung Tugu	11,162.77	2,003.70	13,166.47	5,743.43	189.91	1,148.86	1,205.69	29,702.58	47	1,045.01
PT Asuransi Tugu Pratama Indonesia Tbk.	122,038.92	102,081.09	224,120.01	39,120.72	2,285.57	6,119.56	14,289.75	448,186.88	355	116,019.17
PT Badak NGL	-	-	10,829.05	2,320.80	-	670.74	272.12	(3,636.28)	-	36,482.55
PT Bakti Timah Medika	24,323.86	3.69	24,327.55	(3.15)	248.73	-	17.76	(3.58)	1,140	21.42
PT Bakti Timah Solusi Medika	1,063.86	-	1,063.86	(23.72)	-	9.73	100.47	(199.06)	4	206.87
PT Banggai Bahtera Laju Abadi	-	3,225.51	3,225.51	237.32	-	146.92	48,905.93	415.85	-	48,819.59
PT Bangkit Bahtera Laju Abadi	-	6,301.02	6,301.02	1,144.98	-	-	21,722.01	1,719.67	-	27,997.00
PT Barung Bahtera Laju Abadi	-	1,876.10	1,876.10	(594.97)	-	122.28	26,529.91	(726.49)	-	26,035.12
PT Benggala Bahtera Laju Abadi	-	3,207.99	3,207.99	257.75	-	59.32	50,151.76	487.08	-	49,888.07
PT Bepondi Bahtera Laju Abadi	-	842.01	842.01	(235.00)	-	1.41	6,881.19	(339.74)	-	6,659.35

Kurs Neraca: 12.441
per 1 Januari 2015

Berdasarkan Lampiran Peraturan Direktorat Jenderal Pajak Nomor 29/PJ/2017 tentang Tata Cara Pengelolaan Laporan Per Negara

Exchange Rate: 12,441
as of January 1, 2015

According to the Appendix of the Directorate General of Taxes Regulation Number 29/PJ/2017 concerning the Procedures for Managing Country Reports

b. Data CbCR Indonesia Desember Tahun 2022 (2/8)
The CbCR Data of Indonesia in December 2022 (2/8)

Data dalam ratusan juta dollar
Data in hundred million dollar

Name	Revenues - Unrelated Party	Revenues - Related Party	Revenues - Total	Profit (Loss) before Income Tax	Income Tax Paid (on a cash basis)	Income Tax Accrued - Current Year	Stated Capital	Accumulated Earnings	Number of Employees (number)	Tangible Assets other than Cash and Cash Equivalents
Indonesia	221,596,649.31	207,735,349.60	431,802,420.54	76,742,107.92	4,193,801.92	8,773,371.05	151,816,697.93	339,169,931.19	50,820	769,775,157.39
Entities di Indonesia										
PT Bras s Bahtera Laju Abadi	-	3,655.11	3,655.11	308.58	-	-	18,810.89	1,103.41	-	22,327.75
PT Damanusa Bahtera Laju Abadi	-	966.52	966.52	(20.28)	-	0.75	18,283.46	59.35	-	17,791.22
PT Damar Bahtera Laju Abadi	-	1,100.11	1,100.11	(230.71)	-	9.04	18,280.22	(316.18)	-	17,921.27
PT Donggi Senoro LNG	-	-	1,897,985.34	365,661.77	-	-	946,500.00	289,915.81	306	1,035,215.01
PT Elnusa Fabrikasi Konstruksi	1,548.38	33,968.31	35,516.69	2,930.87	218.97	-	5,300.73	(3,380.18)	223	10,733.71
PT Elnusa Geosains Indonesia	-	-	-	-	-	-	878.03	(72.03)	-	-
PT Elnusa Oilfield Services	-	325.24	325.24	317.94	6.50	18.56	2,683.72	595.29	-	-
PT Elnusa Petrofin	240,514.63	366,032.88	606,547.51	31,857.60	2,164.37	6,213.27	1,387.20	4,269.70	193	53,299.30
PT Elnusa Tbk	31,824.69	291,119.71	322,944.39	13,456.98	3,802.64	-	58,664.90	210,931.94	1,053	117,674.23
PT Elnusa Trans Samudera	232.76	35,221.61	35,454.36	2,643.21	654.87	90.69	22,086.09	10,887.63	70	25,032.32
PT Gagas Energi Indonesia	41,730.02	1,885.75	43,615.77	1,439.24	456.98	376.04	21,604.15	55,569.53	69	42,118.83
PT Indopelita Aircraft Services	7,037.30	12,181.15	19,218.45	1,058.91	329.93	36.54	2,626.42	(1,582.08)	78	2,214.32
PT Industri Baterai Indonesia	4,020.63	-	4,020.63	(15,759.70)	198.20	(107.41)	36,315.73	(19,053.13)	44	2,843.08
PT Jawa Satu Power	126,559.90	-	126,559.90	21,382.82	-	-	189,744.50	49,104.02	116	1,470,583.50
PT Jawa Satu Regas	-	-	-	(2,448.51)	-	-	39,080.00	(2,694.57)	-	325,438.33
PT Kalimantan Jawa Gas	5,068.57	-	5,068.57	(10,183.07)	106.18	320.37	41,364.87	8,272.97	21	5,600.18
PT Katalis Sinergi Indonesia	-	-	-	(198.80)	-	-	4,762.57	(143.90)	3	10.51
PT Kilang Pertamina Balikpapan	-	-	-	(10,102.15)	-	-	2,620,881.20	(8,767.87)	114	2,702,422.12
PT Kilang Pertamina Internasional	542,095.21	36,404,464.66	36,946,559.87	(509,480.52)	9,469.12	150,990.32	8,886,828.41	262,875.42	5,862	11,864,590.40
PT Krakatau Medika	23,998.93	1,944.14	25,943.07	1,461.26	334.39	213.24	39.05	63.97	413	62.58
PT Lamong Nusantara Gas	-	-	-	13.14	-	-	11,655.01	208.63	10	3.94
PT Liran Bahtera Laju Abadi	-	5,074.23	5,074.23	1,415.21	-	-	21,713.03	2,259.58	-	28,377.39
PT Miangas Bahtera Laju Abadi	-	1,845.08	1,845.08	74.30	-	54.11	25,517.85	120.90	-	24,996.47
PT Mitra Tours & Travel	-	-	41,592.72	4,073.31	-	-	3,220.64	6,378.19	15	152.32
PT Nusantara Medika Utama	36,554.66	372.96	36,927.62	9,817.80	1,961.52	2,164.17	2,769.07	24,999.55	830	24,393.37

Kurs Neraca: 12.441
per 1 Januari 2015

Berdasarkan Lampiran Peraturan Direktorat Jenderal Pajak Nomor 29/PJ/2017 tentang Tata Cara Pengelolaan Laporan Per Negara

Exchange Rate: 12,441
as of January 1, 2015

According to the Appendix of the Directorate General of Taxes Regulation Number 29/PJ/2017 concerning the Procedures for Managing Country Reports

b. Data CbCR Indonesia Desember Tahun 2022 (3/8)
The CbCR Data of Indonesia in December 2022 (3/8)

Data dalam ratusan juta dollar
Data in hundred million dollar

Name	Revenues - Unrelated Party	Revenues - Related Party	Revenues - Total	Profit (Loss) before Income Tax	Income Tax Paid (on a cash basis)	Income Tax Accrued - Current Year	Stated Capital	Accumulated Earnings	Number of Employees (number)	Tangible Assets other than Cash and Cash Equivalents
Indonesia	221,596,649.31	207,735,349.60	431,802,420.54	76,742,107.92	4,193,801.92	8,773,371.05	151,816,697.93	339,169,931.19	50,820	769,775,157.39
Entities di Indonesia										
PT Nusantara Regas	-	-	346,160.06	37,348.74	-	-	145,589.13	103,089.37	10	3.94
PT Patra Badak Arun Solusi	1,493.19	131.95	1,625.13	4.54	27.18	587.95	15.51	14.15	104	66.49
PT Patra Drilling Contractor	368.10	217,658.49	218,026.59	9,770.27	2,963.06	2,427.02	1,265.98	23,424.43	13	20,066.73
PT Patra Jasa	14,426.46	95,466.30	109,892.76	9,585.13	-	797.10	123,427.70	53,663.53	361	225,876.05
PT Patra Logistik	2,016.71	76,651.76	78,668.46	6,543.23	2,313.37	2,404.00	32.07	20,927.34	124	55,814.12
PT Patra Nusa Data	-	1,767.82	1,767.82	411.01	19.11	3.56	48.23	10,326.58	45	1,933.40
PT Patra SK	-	383,540.87	383,540.87	25,405.45	5,720.70	5,720.70	87,500.00	40,934.60	114	70,069.81
PT Patra Trading	23,386.33	29,670.81	53,057.14	3,430.77	617.52	137.25	1,474.09	18,743.36	191	30,886.95
PT Patra Wijaya Realtindo	-	-	-	(653,936.43)	358,316.14	-	12,500,000.00	(1,332,478.91)	-	-
PT Pelindo Husada Citra	26,630.60	3,514.63	30,145.24	(2,834.47)	-	-	11,413.87	16,192.07	703	28,713.02
PT Pelita Air Service	24,228.48	31,911.02	56,139.50	(21,375.45)	-	505.96	185,150.83	(166,114.54)	513	17,335.77
PT Permata Graha Nusantara	5,173.29	24,870.05	30,043.33	3,433.25	71.10	790.96	37,939.12	(16,696.35)	43	9,109.42
PT Permata Karya Jasa	4,307.88	31,088.84	35,396.73	3,575.30	296.02	234.13	884.17	-	-	-
PT Perta Arun Gas	102,407.40	7,694.03	110,101.43	57,732.36	5,880.07	13,768.97	29,474.16	109,274.49	109	65,344.13
PT Perta Daya Gas	-	16,580.74	16,580.74	3,355.24	943.38	1,067.27	8,037.94	-	5	34,060.68
PT Pertagas Niaga	67,985.73	138,181.46	206,167.19	3,418.93	(701.90)	1,356.35	45,291.40	44,830.28	33	117,571.76
PT Pertamina (Persero)	1,469,383.30	557,002.70	2,026,386.00	3,916,311.00	(158,653.21)	-	2,983.49	1,522.12	1,331	77.74
PT Pertamina Algeria Eksplorasi Produksi	147,122.88	176,995.55	324,118.42	162,640.73	49,939.11	94,957.06	758,197.31	428,086.30	-	1,097,011.16
PT Pertamina Bina Medika IHC	400,169.52	209,965.92	610,135.44	9,534.68	4,861.99	(4,424.32)	234,850.57	88,712.32	7,952	238,709.59
PT Pertamina Drilling Services Indonesia	229,351.93	4,652.41	234,004.34	23,309.00	-	3,819.74	440,457.00	247.97	306	532,017.00
PT Pertamina East Natuna	-	-	-	-	-	-	136.05	-	-	-
PT Pertamina EP	3,290,577.00	15,899.00	3,306,476.00	991,580.00	-	-	24,730.00	2,871,224.00	3,388	95,541.00
PT Pertamina EP Cepu	1,055,166.97	677,640.80	1,732,807.77	1,604,873.00	(446,405.46)	446,405.46	48.97	(2,955,319.00)	1,056	37,456.00
PT Pertamina Gas	174,121.25	194,093.11	368,214.36	189,763.21	13,770.36	10,716.07	305,332.09	1,420,537.45	476	1,316,633.63
PT Pertamina Geothermal Energy	386,067.96	-	386,067.96	194,760.10	63,143.38	1,089.60	1,075,051.39	164,957.66	404	1,925,585.70

Kurs Neraca: 12.441
per 1 Januari 2015

Berdasarkan Lampiran Peraturan Direktorat Jenderal Pajak Nomor 29/PJ/2017 tentang Tata Cara Pengelolaan Laporan Per Negara

Exchange Rate: 12,441
as of January 1, 2015

According to the Appendix of the Directorate General of Taxes Regulation Number 29/PJ/2017 concerning the Procedures for Managing Country Reports

b. Data CbCR Indonesia Desember Tahun 2022 (4/8)
The CbCR Data of Indonesia in December 2022 (4/8)

Data dalam ratusan juta dollar
Data in hundred million dollar

Name	Revenues - Unrelated Party	Revenues - Related Party	Revenues - Total	Profit (Loss) before Income Tax	Income Tax Paid (on a cash basis)	Income Tax Accrued - Current Year	Stated Capital	Accumulated Earnings	Number of Employees (number)	Tangible Assets other than Cash and Cash Equivalents
Indonesia	221,596,649.31	207,735,349.60	431,802,420.54	76,742,107.92	4,193,801.92	8,773,371.05	151,816,697.93	339,169,931.19	50,820	769,775,157.39
Entities di Indonesia										
PT Pertamina Hulu Attaka – Blok Attaka / Attaka Block	-	-	-	(1,047.00)	-	-	111.02	4,177.35	-	-
PT PHE	-	-	152.89	1,262,877.99	-	-	13,631,466.44	4,154,039.48	-	17,558.77
PT PHE Abar - Blok Abar	-	-	-	(14,323.63)	-	-	19.44	31,231.02	-	55.17
PT PHE Ambalat Timur	-	-	-	(27.10)	-	-	9.14	1,298.66	-	14.33
PT PHE Anggursi - Blok Anggursi	-	-	-	(10,315.65)	-	-	19.44	20,462.04	-	370.10
PT PHE Arun	-	-	-	0.79	-	-	1,420.47	(159.24)	-	-
PT PHE Babar Selaru – Blok Babar Selaru	-	-	-	-	-	-	25.77	7,947.47	-	25.13
PT PHE Coastal Plains Pekanbaru - Blok Coastal Plains dan Pekanbaru	-	-	47,601.55	14,450.82	2,797.21	3,557.27	27.03	206,714.89	-	292,965.82
PT PHE Corridor - Blok Corridor	5,293.11	2,600,910.01	2,606,203.12	127,491.87	51,821.90	56,096.42	27.52	428,077.11	0	1,782.68
PT PHE East Sepinggan - Blok East Sepinggan	-	142,472.06	142,472.06	72,752.52	12,961.62	12,961.62	21.50	86,813.75	0	465,617.87
PT PHE Gebang N Sumatera - Blok Gebang	-	-	-	69.69	-	-	27.52	2,132.16	-	-
PT PHE Jabung - Blok Jabung	120,225.97	30,442.33	150,668.30	99,445.84	-	47,282.86	27.52	(221,224.37)	-	46,211.42
PT PHE Jambi Merang - Blok Jambi Merang	242.47	247,640.75	247,883.22	175,757.92	-	-	27.52	559,691.82	157	3,534.64
PT PHE Kakap - Blok Kakap	2,985.39	3,843.86	6,829.25	2,203.30	-	685.21	27.52	(12,605.73)	-	117.59
PT PHE Kampar - Blok Kampar	466.98	17,541.38	18,008.36	(891.91)	-	-	3.78	(28,504.18)	8	946.02
PT PHE Lepas Pantai Bunyu - Blok Maratua	-	-	-	(683.72)	-	-	11.26	1,100.71	0	2,000.00
PT PHE Makassar Strait - Blok Makassar Strait	1,271.22	2,208.38	3,479.60	(329.84)	-	33.93	27.52	(11,592.75)	-	2,042.39

Kurs Neraca: 12.441
per 1 Januari 2015

Berdasarkan Lampiran Peraturan Direktorat Jenderal Pajak Nomor 29/PJ/2017 tentang Tata Cara Pengelolaan Laporan Per Negara

Exchange Rate: 12,441
as of January 1, 2015

According to the Appendix of the Directorate General of Taxes Regulation Number 29/PJ/2017 concerning the Procedures for Managing Country Reports

b. Data CbCR Indonesia Desember Tahun 2022 (5/8)
The CbCR Data of Indonesia in December 2022 (5/8)

Data dalam ratusan juta dollar
Data in hundred million dollar

Name	Revenues - Unrelated Party	Revenues - Related Party	Revenues - Total	Profit (Loss) before Income Tax	Income Tax Paid (on a cash basis)	Income Tax Accrued - Current Year	Stated Capital	Accumulated Earnings	Number of Employees (number)	Tangible Assets other than Cash and Cash Equivalents
Indonesia	221,596,649.31	207,735,349.60	431,802,420.54	76,742,107.92	4,193,801.92	8,773,371.05	151,816,697.93	339,169,931.19	50,820	769,775,157.39
Entities di Indonesia										
PT PHE Metana Kalimantan A - Blok Sangatta I	-	-	-	(1.48)	-	-	21.70	7,265.69	-	(0.00)
PT PHE Metana Kalimantan B - Blok Sangatta II	-	-	-	(1.57)	-	-	24.00	5,180.46	-	(0.00)
PT PHE Metana Sumatera 2 - Blok Muara Enim	-	-	-	(1.54)	-	-	25.06	615.41	-	-
PT PHE Metana Sumatera 5 - Blok Muara Enim II	-	-	-	(1.45)	-	-	27.91	416.08	-	-
PT PHE Metana Sumatera Tanjung Enim - Blok Tanjung Enim	-	-	-	(1.24)	-	-	25.06	293.48	-	-
PT PHE MNK Sakakemang - Blok MNK Sakakemang	-	-	-	-	-	-	9.45	-	0	130.28
PT PHE MNK Sumatera Utara - Blok MNK Sumbagut	-	-	-	(55.52)	-	-	26.03	15,214.36	-	1,174.55
PT PHE NSB - Blok B	-	-	-	(6,276.81)	-	-	22.04	30,094.51	-	26,058.15
PT PHE NSO - Blok NSO	17,985.78	2,009.75	19,995.53	(58,736.47)	-	-	27.30	(98,808.22)	42	6,560.54
PT PHE Ogan Komering - Blok Ogan Komering	349.54	56,493.64	56,843.18	9,383.64	2,716.82	2,724.34	27.52	60,730.90	24	992.91
PT PHE ONWJ - Blok ONWJ	56.00	787,102.00	787,158.00	296,654.00	66,884.56	88,435.92	27.00	1,423,924.00	398	49,414.00
PT PHE OSES - Blok OSES	-	510,658.00	510,658.00	72,962.00	-	-	(23,728.00)	236,692.00	351	298,846.12
PT PHE Raja Tempirai - Blok Pendopo - Raja	959.90	657.76	1,617.66	(6,774.14)	-	-	27.52	(23,171.33)	10	41.44
PT PHE Randugunting - Blok Randugunting	1,361.40	18.27	1,379.67	(6,405.03)	-	49.43	53.72	50,967.32	-	664.70
PT PHE Salawati - Blok Salawati	-	6,134.47	6,134.47	(1,125.99)	-	(18.49)	27.52	9,642.23	-	561.34
PT PHE Salawati Basin - Blok Kepala Burung	4,292.18	31,281.12	35,573.29	16,600.75	-	3,109.42	27.52	(20,713.29)	-	2,856.76
PT PHE Semai II - Blok Semai II	-	-	-	-	-	-	27.52	50,093.12	-	20.63
PT PHE Siak - Blok Siak	-	-	25,445.55	7,498.31	1,865.07	2,090.14	21.16	(8,296.86)	45	182,561.97
PT PHE Simenggaris - Blok Simenggaris	766.90	-	766.90	-	-	-	27.52	-	0	-
PT PHE South East Jambi - Blok South East Jambi	-	-	-	(3,834.61)	-	-	11.26	5,809.34	-	135.00
PT PHE Tengah K - Blok Tengah	-	-	-	-	-	-	27.52	-	-	-
PT PHE Tomori Sulawesi - Blok Senoro Toili	-	510,491.54	510,491.54	476,256.12	142,876.84	142,876.84	27.52	743,313.78	-	2,768,118.61
PT PHE Tuban - Blok Tuban	-	-	-	11.68	-	-	37,417.91	(16,765.56)	-	0.00

Kurs Neraca: 12.441
per 1 Januari 2015

Berdasarkan Lampiran Peraturan Direktorat Jenderal Pajak Nomor 29/PJ/2017 tentang Tata Cara Pengelolaan Laporan Per Negara

Exchange Rate: 12,441
as of January 1, 2015

According to the Appendix of the Directorate General of Taxes Regulation Number 29/PJ/2017 concerning the Procedures for Managing Country Reports

b. Data CbCR Indonesia Desember Tahun 2022 (6/8)
The CbCR Data of Indonesia in December 2022 (6/8)

Data dalam ratusan juta dollar
Data in hundred million dollar

Name	Revenues - Unrelated Party	Revenues - Related Party	Revenues - Total	Profit (Loss) before Income Tax	Income Tax Paid (on a cash basis)	Income Tax Accrued - Current Year	Stated Capital	Accumulated Earnings	Number of Employees (number)	Tangible Assets other than Cash and Cash Equivalents
Indonesia	221,596,649.31	207,735,349.60	431,802,420.54	76,742,107.92	4,193,801.92	8,773,371.05	151,816,697.93	339,169,931.19	50,820	769,775,157.39
Entities di Indonesia										
PT PHE Tuban East Java - Blok Tuban	18,980.00	-	18,980.00	2,691.35	729.58	-	27.52	(1,938.62)	20	10,415.67
PT PHE W Madura Offshore - Blok West Madura	8,657.15	137,378.85	146,036.00	(250,304.00)	(13,177.28)	13,177.28	27.52	534,275.00	481	210,069.49
PT PHE West Glagah Kambuna - Blok West Glagah Kambuna	-	-	-	2.05	-	-	26.42	42,682.89	-	(374.32)
PT Pertamina Hulu Indonesia	-	-	-	-	-	-	109.83	247,565.59	405	929,918.84
PT Pertamina Hulu Kalimantan Timur – Blok East Kalimantan/ East Kalimantan Blok	4,797.12	307,330.65	312,127.76	(78,941.67)	-	-	104.13	133,468.63	446	81,953.18
PT Pertamina Hulu Mahakam – Blok Mahakam / Mahakam Blok	434,063.88	929,389.00	1,363,452.88	476,232.62	119,058.15	119,058.15	110.00	811,405.00	1,116	1,577,998.00
PT Pertamina Hulu Rokan - Blok Rokan	-	3,895,059.61	3,895,059.61	2,256,258.97	333,161.99	383,843.83	785,000.00	1,908,231.77	2,349	1,482,221.47
PT Pertamina Hulu Sanga Sanga – Blok Sanga-sanga / Sanga Sanga Blok	123,956.00	498,355.00	622,311.00	694,291.00	23,880.47	28,750.89	108.00	1,559,209.00	402	26.32
PT Pertamina Hulu West Ganal – Blok West Ganal / West Ganal Blok	-	-	-	(771.89)	-	-	106.62	(2,061.50)	-	-
PT Pertamina Internasional Eksplorasi dan Produksi	-	-	-	18,625.36	-	-	3,898,524.63	18,946.56	178	3,714,533.65
PT Pertamina International Shipping	43,122.51	2,255,670.06	2,298,792.58	204,178.53	-	7,932.02	1,586,650.97	336,667.65	662	2,349,476.65
PT Pertamina Irak Eksplorasi Produksi	-	-	91,668.39	19,005.00	-	8,579.25	398,465.04	23,189.80	1	499,700.41
PT Pertamina Lubricants	986,539.27	45,096.85	1,031,636.11	163,133.05	40,573.27	36,875.64	234,278.02	203,926.45	444	295,992.54
PT Pertamina Malaysia Eksplorasi Produksi	289,617.34	131,063.21	420,680.56	171,117.95	35,741.39	36,454.43	1,408,423.79	(160,137.64)	1	947,285.24
PT Pertamina Marine Engineering	389.50	30,189.19	30,578.69	3,161.77	77.20	602.45	964.55	10,548.82	18	733.99
PT Pertamina Marine Solution	-	90,250.83	90,250.83	4,756.23	-	-	377.38	14,908.29	79	-

Kurs Neraca: 12.441
per 1 Januari 2015

Berdasarkan Lampiran Peraturan Direktorat Jenderal Pajak Nomor 29/PJ/2017 tentang Tata Cara Pengelolaan Laporan Per Negara

Exchange Rate: 12,441
as of January 1, 2015

According to the Appendix of the Directorate General of Taxes Regulation Number 29/PJ/2017 concerning the Procedures for Managing Country Reports

b. Data CbCR Indonesia Desember Tahun 2022 (7/8)
The CbCR Data of Indonesia in December 2022 (7/8)

Data dalam ratusan juta dollar
Data in hundred million dollar

Name	Revenues - Unrelated Party	Revenues - Related Party	Revenues - Total	Profit (Loss) before Income Tax	Income Tax Paid (on a cash basis)	Income Tax Accrued - Current Year	Stated Capital	Accumulated Earnings	Number of Employees (number)	Tangible Assets other than Cash and Cash Equivalents
Indonesia	221,596,649.31	207,735,349.60	431,802,420.54	76,742,107.92	4,193,801.92	8,773,371.05	151,816,697.93	339,169,931.19	50,820	769,775,157.39
Entities di Indonesia										
PT Pertamina Patra Niaga	65,821,045.73	44,343.61	65,865,389.34	306,966.82	668,562.64	46,123.35	17,749,329.76	13.89	3,774	6,857,561.21
PT Pertamina Pedeve Indonesia	3,724.12	8,800.70	12,524.81	11,450.22	124.96	38.66	14,066.39	58,423.51	8	258,950.45
PT Pertamina Petrochemical Trading	391,119.24	0.08	391,119.32	10,485.53	339.28	2,348.42	8,000.00	16,207.38	15	7,633.51
PT Pertamina Port and Logistics	3,955.48	49,486.69	53,442.17	10,859.77	420.71	2,501.97	325.29	2,888.61	6	2,518.58
PT Pertamina Power Indonesia	1,407.11	1,117.19	2,524.30	107,761.25	-	-	1,374,480.34	64,218.72	76	15,548.38
PT Pertamina Retail	(1,585,131.70)	(18,417.52)	(1,603,358.06)	39,126.34	162.92	(540.40)	(94,652.23)	(80,805.79)	289	154,380.89
PT Pertamina Rosneft Pengembangan kilang Pengolahan dan Petrokimia	-	-	-	(4,044.81)	-	-	227,222.55	(7,088.87)	-	199,769.90
PT Pertamina Terminal Energy	76,426.85	-	76,426.85	1,597.11	248.47	542.58	539.79	6.30	150	519,737.22
PT Pertamina Training & Consulting	1,859.71	262,933.26	264,792.97	8,514.30	170.64	2,430.13	241.14	32,322.50	4,014	6.26
PT Pertamina Trans Kontinental	53,053.42	331,554.94	384,608.36	76,750.78	-	-	92,999.37	203,308.49	573	310,420.61
PT Perta-Samtan Gas	-	150,154.52	150,154.52	66,661.80	17,100.16	17,395.83	57,943.50	36,538.55	145	47,575.90
PT Perusahaan Gas Negara Tbk	2,262,299.14	20,452.87	2,282,752.01	255,420.30	26,053.03	49,015.74	628,358.14	3,055,199.09	1,009	1,193,677.49
PT PGAS Solution	15,767.46	139,737.91	155,505.37	66,661.80	37.57	155.91	6,832.25	65,755.03	216	5,641.33
PT PGAS Telekomunikasi	5,685.21	21,126.85	26,812.05	2,383.67	1,349.81	161.91	16,968.09	16,969.33	103	25,225.52
PT PGN LNG Indonesia	-	98,181.63	98,181.63	2,731.31	-	89.84	353,918.00	-	30	197,284.34
PT Pratama Mitra Sejati	143,413,933.43	152,847,884.46	296,261,817.90	62,958,752.97	2,687,768.31	6,854,449.58	78,020,000.00	320,057,286.19	69	716,390,377.41
PT Prima Armada Raya	-	(53,611.12)	(53,611.12)	(2,312.88)	(794.12)	-	(2,801.51)	16,487.32	40	57,158.10
PT Prima Citra Nutrindo	310.33	2,195.13	2,505.46	53.61	3.32	17.22	350.19	136.44	18	197.89
PT Rolas Nusantara Medika	7,920.25	5,280.17	13,200.41	1,979.38	393.34	423.39	4,970.10	7,805.16	375	16,083.89
PT Rumah Sakit Pelabuhan	38,964.40	5,822.86	44,787.26	2,315.92	115.85	558.31	12,376.74	(768.50)	848	24,250.32
PT Rumah Sakit Pelni	9,874.03	36,016.87	45,890.90	6,315.89	914.46	1,483.35	24,118.64	18,997.82	1,667	39,365.21
PT Saka Bangkanai Klemantan	10,552.07	-	10,552.07	(7,149.66)	-	-	20,143.02	(21,498.69)	-	64,934.94
PT Saka Eksplorasi Baru	-	-	-	(1.25)	-	-	7.74	(454.92)	-	-
PT Saka Eksplorasi Timur	-	-	-	(483.00)	-	-	7.74	(826.97)	-	-
PT Saka Eksplorasi Ventura	-	-	-	(1.25)	-	-	-	-	-	-
PT Saka Energi Bangkanai Barat	-	-	-	(1.71)	-	-	4.00	(41.71)	-	5,883.76

Kurs Neraca: 12.441
per 1 Januari 2015

Berdasarkan Lampiran Peraturan Direktorat Jenderal Pajak Nomor 29/PJ/2017 tentang Tata Cara Pengelolaan Laporan Per Negara

Exchange Rate: 12,441
as of January 1, 2015

According to the Appendix of the Directorate General of Taxes Regulation Number 29/PJ/2017 concerning the Procedures for Managing Country Reports

b. Data CbCR Indonesia Desember Tahun 2022 (8/8)
The CbCR Data of Indonesia in December 2022 (8/8)

Data dalam ratusan juta dollar
Data in hundred million dollar

Name	Revenues - Unrelated Party	Revenues - Related Party	Revenues - Total	Profit (Loss) before Income Tax	Income Tax Paid (on a cash basis)	Income Tax Accrued - Current Year	Stated Capital	Accumulated Earnings	Number of Employees (number)	Tangible Assets other than Cash and Cash Equivalents
Indonesia	221,596,649.31	207,735,349.60	431,802,420.54	76,742,107.92	4,193,801.92	8,773,371.05	151,816,697.93	339,169,931.19	50,820	769,775,157.39
Entites di Indonesia										
PT Saka Energi Indonesia	7,894.25	-	7,894.25	(53,163.80)	-	-	1,062,537.41	(369,626.43)	-	0.02
PT Saka Energi Internasional	0.01	-	0.01	(1.17)	-	-	7.78	(112.93)	-	-
PT Saka Energi Investama	-	-	-	(1.05)	-	-	-	(2.57)	-	-
PT Saka Energi Investasi	0.00	-	0.00	-	-	-	8.10	463.32	-	-
PT Saka Energi Muara Bakau	97,647.70	-	97,647.70	9,798.97	-	-	3.99	16,006.71	-	162,691.15
PT Saka Energi Sepinggan	18.41	-	18.41	17.70	-	-	-	(834.01)	-	1,090.57
PT Saka Energi Sepinggan Timur	16.36	-	16.36	(67.70)	-	-	850.94	(52.09)	-	-
PT Saka Energi Sumatera	159.59	-	159.59	145.61	-	-	51.71	(22,412.84)	-	-
PT Saka Energi Wokam	10.80	-	10.80	(219.34)	-	-	7.59	(3,994.18)	-	-
PT Saka Energi Yamdena Barat	9.71	-	9.71	9.54	-	-	-	(807.93)	-	3,521.56
PT Saka Indonesia Sesulu	0.41	-	0.41	(156.94)	-	-	17,480.99	(13,683.69)	-	99,742.64
PT Saka Ketapang Perdana	71,072.04	-	71,072.04	20,191.96	11,550.01	-	20,607.95	18,038.86	-	80,563.20
PT Sigma Cipta Utama	2,533.74	27,041.56	29,575.30	3,108.14	200.69	842.78	9,288.64	5,407.99	104	5,820.40
PT Solusi Energy Nusantara	594.69	20,262.04	20,856.72	3,089.59	2,902.87	-	643.04	4,820.18	415	9,111.92
PT Synergy Risk Management Consultants	8,799.67	195.68	8,995.35	913.66	325.60	329.19	93.60	3,102.00	47	2,997.65
PT Telemedia Dinamika Sarana	7,268.30	1,249.13	8,517.43	1,575.59	307.25	89.19	24.11	3,460.30	20	217.44
PT Trans Yeong Maritime	7,190.84	-	7,190.84	5,190.48	440.48	877.17	5,492.31	8,315.16	8	19,919.67
PT Trans-Pacific Processing and sale of oil and Petrochemical Indotama	4,371.00	-	4,371.00	(23,843.00)	-	-	19,318.48	(1,525.29)	471	385,782.00
PT Transportasi Gas Indonesia	2,804.15	17,531.61	20,335.76	75,098.94	11,632.66	22,338.72	136,546.64	82,447.90	274	119,674.14
PT Tuban Petrochemical Industries	-	323,355.74	323,355.74	79,618.04	1,259.09	10,209.66	404,455.45	(164,027.95)	13	96,812.85
PT Tugu Pratama Interindo	173.09	1,955.03	2,128.13	1,335.65	133.56	23.16	58,511.37	5,749.60	6	24.36
PT Tugu Reasuransi Indonesia	126,771.72	-	126,771.72	6,270.14	-	-	50,338.20	41,356.02	145	15,847.68
PT Widar Mandripa Nusantara	653.74	263.58	917.32	418.72	(93.57)	25.67	4,113.82	-	6	851.77
Saka Energi Exploration Production B.V.	0.08	-	0.08	(56.42)	-	-	1.00	(333.92)	-	-
Total	221,596,649.31	207,735,349.60	431,802,420.54	76,742,107.92	4,193,801.92	8,773,371.05	151,816,697.93	339,169,931.19	50,820	769,775,157.39

Kurs Neraca: 12.441
per 1 Januari 2015

Berdasarkan Lampiran Peraturan Direktorat Jenderal Pajak Nomor 29/PJ/2017 tentang Tata Cara Pengelolaan Laporan Per Negara

Exchange Rate: 12,441
as of January 1, 2015

According to the Appendix of the Directorate General of Taxes Regulation Number 29/PJ/2017 concerning the Procedures for Managing Country Reports

c. Aktivitas Bisnis Indonesia (1/13)
Business Activities in Indonesia (1/13)

Pertamina Group Constituent Entities	Residence Tax Jurisdiction	Business Activity
KSO Elnusa - RAGA	Indonesia	Holding Company
PEP Cepu ADK - Blok Alas Dara Kemuning	Indonesia	Oil & Gas Exploitation
Pertamina Hulu Energi Ambalat Ltd.- Blok Ambalat	Indonesia	Dormant
Pertamina Hulu Energi Bukat Ltd – Blok Bukat	Indonesia	Dormant
Pertamina Hulu Energi Nunukan Company - Blok Nunukan	Indonesia	Exploration and Production
Pertamina Hulu Energi Offshore North West Java Llc. - Blok Offshore Northwest Java	Indonesia	Dormant
Pertamina Hulu Energi Oil and Gas B.V - Blok A (Natuna Sea)	Indonesia	Holding shares or other equity instruments
PGAS Telecommunications International Pte. Ltd.	Indonesia	Exploration and Production
PT Alor Bahtera Laju Abadi	Indonesia	Exploration and Production
PT Ararkula Bahtera Laju Abadi	Indonesia	Exploration and Production
PT Aru Bahtera Laju Abadi	Indonesia	Exploration and Production
PT Asuransi Samsung Tugu	Indonesia	Insurance, Holding shares or other equity instruments
PT Asuransi Tugu Pratama Indonesia Tbk.	Indonesia	Insurance, Holding shares or other equity instruments
PT Badak NGL	Indonesia	Exploration and Production

c. Aktivitas Bisnis Indonesia (2/13)
Business Activities in Indonesia (2/13)

Pertamina Group Constituent Entities	Residence Tax Jurisdiction	Business Activity
PT Bakti Timah Medika	Indonesia	Holding shares or other equity instruments, Jasa Pelayanan Kesehatan
PT Bakti Timah Solusi Medika	Indonesia	Jasa Pelayanan Kesehatan
PT Banggai Bahtera Laju Abadi	Indonesia	Other
PT Bangkit Bahtera Laju Abadi	Indonesia	Other
PT Barung Bahtera Laju Abadi	Indonesia	Other
PT Bengkulu Bahtera Laju Abadi	Indonesia	Other
PT Bepondi Bahtera Laju Abadi	Indonesia	Other
PT Brass Bahtera Laju Abadi	Indonesia	Other
PT Damanusa Bahtera Laju Abadi	Indonesia	Other
PT Damar Bahtera Laju Abadi	Indonesia	Other
PT Donggi Senoro LNG	Indonesia	Other
PT Elnusa Fabrikasi Konstruksi	Indonesia	Insurance, Holding shares or other equity instruments
PT Elnusa Geosains Indonesia	Indonesia	Dormant
PT Elnusa Oilfield Services	Indonesia	Service Company for Oil and Gas

c. Aktivitas Bisnis Indonesia (3/13)
Business Activities in Indonesia (3/13)

Pertamina Group Constituent Entities	Residence Tax Jurisdiction	Business Activity
PT Elnusa Petrofin	Indonesia	Exploration and Production
PT Elnusa Tbk	Indonesia	Holding shares or other equity instruments
PT Elnusa Trans Samudera	Indonesia	Holding shares or other equity instruments, perusahaan bergerak dibidang jasa marine & offshore support
PT Gagas Energi Indonesia	Indonesia	Holding shares or other equity instruments
PT Indopelita Aircraft Services	Indonesia	Services
PT Industri Baterai Indonesia	Indonesia	other
PT Jawa Satu Power	Indonesia	IPP (Independent Power Producer)
PT Jawa Satu Regas	Indonesia	FSRU (Floating Storage Regasification Unit)
PT Kalimantan Jawa Gas	Indonesia	Exploration & Production
PT Katalis Sinergi Indonesia	Indonesia	Holding shares or other equity instruments
PT Kilang Pertamina Balikpapan	Indonesia	Insurance, Holding shares or other equity instruments
PT Kilang Pertamina Internasional	Indonesia	Holding shares or other equity instruments
PT Krakatau Medika	Indonesia	Insurance, Jasa Pelayanan Kesehatan field)
PT Lamong Nusantara Gas	Indonesia	Services

c. Aktivitas Bisnis Indonesia (4/13)
Business Activities in Indonesia (4/13)

Pertamina Group Constituent Entities	Residence Tax Jurisdiction	Business Activity
PT Liran Bahtera Laju Abadi	Indonesia	Services
PT Miangas Bahtera Laju Abadi	Indonesia	Services
PT Mitra Tours & Travel	Indonesia	Services
PT Nusantara Medika Utama	Indonesia	Penyedia jasa tour and travel
PT Nusantara Regas	Indonesia	Services
PT Patra Badak Arun Solusi	Indonesia	Maintenance and Construction
PT Patra Drilling Contractor	Indonesia	Trading
PT Patra Jasa	Indonesia	Holding shares or other equity instruments
PT Patra Logistik	Indonesia	Holding shares or other equity instruments, Services and rental
PT Patra Nusa Data	Indonesia	Services
PT Patra SK	Indonesia	
PT Patra Trading	Indonesia	Holding shares or other equity instruments
PT Patra Wijaya Realtindo	Indonesia	Services
PT Pelindo Husada Citra	Indonesia	Jasa Pelayanan Kesehatan

c. Aktivitas Bisnis Indonesia (5/13)
Business Activities in Indonesia (5/13)

Pertamina Group Constituent Entities	Residence Tax Jurisdiction	Business Activity
PT Pelita Air Service	Indonesia	Services
PT Permata Graha Nusantara	Indonesia	Services
PT Permata Karya Jasa	Indonesia	Other
PT Perta Arun Gas	Indonesia	Services
PT Perta Daya Gas	Indonesia	Services
PT Pertagas Niaga	Indonesia	Services
PT Pertamina (Persero)	Indonesia	Holding shares or other equity instruments
PT Pertamina Algeria Eksplorasi Produksi	Indonesia	Services
PT Pertamina Bina Medika IHC	Indonesia	Holding shares or other equity instruments, Jasa Pelayanan Kesehatan
PT Pertamina Drilling Services Indonesia	Indonesia	Holding shares or other equity instruments
PT Pertamina East Natuna	Indonesia	Dormant
PT Pertamina EP	Indonesia	Upstream oil and gas (Exploration and Exploitation)
PT Pertamina EP Cepu	Indonesia	
PT Pertamina Gas	Indonesia	Holding shares or other equity instruments

c. Aktivitas Bisnis Indonesia (6/13)
Business Activities in Indonesia (6/13)

Pertamina Group Constituent Entities	Residence Tax Jurisdiction	Business Activity
PT Pertamina Geothermal Energy	Indonesia	Holding shares or other equity instruments
PT Pertamina Hulu Attaka – Blok Attaka / Attaka Block	Indonesia	Holding shares or other equity instruments, Construction - Power Plant
PT Pertamina Hulu Energi	Indonesia	Production of electricity
PT Pertamina Hulu Energi Abar - Blok Abar	Indonesia	Domestic sea transportation for special goods
PT Pertamina Hulu Energi Ambalat Timur	Indonesia	Geothermal
PT Pertamina Hulu Energi Anggursi - Blok Anggursi	Indonesia	Battery Industry
PT Pertamina Hulu Energi Arun	Indonesia	Holding shares or other equity instruments
PT Pertamina Hulu Energi Babar Selaru – Blok Babar Selaru	Indonesia	Dormant
PT Pertamina Hulu Energi Coastal Plains Pekanbaru - Blok Coastal Plains dan Pekanbaru	Indonesia	Dormant
PT Pertamina Hulu Energi Corridor - Blok Corridor	Indonesia	Holding Company
PT Pertamina Hulu Energi East Sepinggan - Blok East Sepinggan	Indonesia	Insurance Industry
PT Pertamina Hulu Energi Gebang N Sumatera - Blok Gebang	Indonesia	Dormant
PT Pertamina Hulu Energi Jabung - Blok Jabung	Indonesia	Reasuransi Konvensional
PT Pertamina Hulu Energi Jambi Merang - Blok Jambi Merang	Indonesia	Dormant

c. **Aktivitas Bisnis Indonesia (7/13)**
Business Activities in Indonesia (7/13)

Pertamina Group Constituent Entities	Residence Tax Jurisdiction	Business Activity
PT Pertamina Hulu Energi Kakap - Blok Kakap	Indonesia	Dormant
PT Pertamina Hulu Energi Kampar - Blok Kampar	Indonesia	Dormant
PT Pertamina Hulu Energi Lepas Pantai Bunyu - Blok Maratua	Indonesia	Dormant
PT Pertamina Hulu Energi Makassar Strait - Blok Makassar Strait	Indonesia	Dormant
PT Pertamina Hulu Energi Metana Kalimantan A - Blok Sangatta I	Indonesia	Dormant
PT Pertamina Hulu Energi Metana Kalimantan B - Blok Sangatta II	Indonesia	Dormant
PT Pertamina Hulu Energi Metana Sumatera 2 - Blok Muara Enim	Indonesia	Dormant
PT Pertamina Hulu Energi Metana Sumatera 5 - Blok Muara Enim II	Indonesia	Dormant
PT Pertamina Hulu Energi Metana Sumatera Tanjung Enim - Blok Tanjung Enim	Indonesia	Dormant
PT Pertamina Hulu Energi MNK Sakakemang - Blok MNK Sakakemang	Indonesia	Dormant
PT Pertamina Hulu Energi MNK Sumatera Utara - Blok MNK Sumbagut	Indonesia	Dormant
PT Pertamina Hulu Energi NSB - Blok B	Indonesia	Dormant
PT Pertamina Hulu Energi NSO - Blok NSO	Indonesia	Dormant
PT Pertamina Hulu Energi Ogan Komering - Blok Ogan Komering	Indonesia	Dormant

c. **Aktivitas Bisnis Indonesia (8/13)**
Business Activities in Indonesia (8/13)

Pertamina Group Constituent Entities	Residence Tax Jurisdiction	Business Activity
PT Pertamina Hulu Energi ONWJ - Blok ONWJ	Indonesia	Dormant
PT Pertamina Hulu Energi OSES - Blok OSES	Indonesia	Dormant
PT Pertamina Hulu Energi Raja Tempirai - Blok Pendopo - Raja	Indonesia	Dormant
PT Pertamina Hulu Energi Randugunting - Blok Randugunting	Indonesia	Dormant
PT Pertamina Hulu Energi Salawati - Blok Salawati	Indonesia	Dormant
PT Pertamina Hulu Energi Salawati Basin - Blok Kepala Burung	Indonesia	Dormant
PT Pertamina Hulu Energi Semai II – Blok Semai II	Indonesia	Dormant
PT Pertamina Hulu Energi Siak - Blok Siak	Indonesia	Dormant
PT Pertamina Hulu Energi Simenggaris - Blok Simenggaris	Indonesia	Dormant. Other
PT Pertamina Hulu Energi South East Jambi - Blok South East Jambi	Indonesia	Dormant
PT Pertamina Hulu Energi Tengah K - Blok Tengah	Indonesia	Dormant
PT Pertamina Hulu Energi Tomori Sulawesi - Blok Senoro Toili	Indonesia	Dormant
PT Pertamina Hulu Energi Tuban - Blok Tuban	Indonesia	Dormant
PT Pertamina Hulu Energi Tuban East Java - Blok Tuban	Indonesia	Dormant

c. Aktivitas Bisnis Indonesia (9/13)
Business Activities in Indonesia (9/13)

Pertamina Group Constituent Entities	Residence Tax Jurisdiction		Business Activity
PT Pertamina Hulu Energi W Madura Offshore - Blok West Madura	Indonesia	Dormant	
PT Pertamina Hulu Energi West Glagah Kambuna - Blok West Glagah Kambuna	Indonesia	Dormant	
PT Pertamina Hulu Indonesia	Indonesia	Perusahaan holding dan investment	
PT Pertamina Hulu Kalimantan Timur – Blok East Kalimantan/ East Kalimantan Block	Indonesia	Dormant	
PT Pertamina Hulu Mahakam – Blok Mahakam / Mahakam Block	Indonesia	Dormant	
PT Pertamina Hulu Rokan - Blok Rokan	Indonesia	Hulu Migas	
PT Pertamina Hulu Sanga Sanga – Blok Sanga-sanga / Sanga Sanga Block	Indonesia	Produsen minyak dan gas hulu	
PT Pertamina Hulu West Ganai – Blok West Ganai / West Ganai Block	Indonesia	Dormant	
PT Pertamina Internasional Eksplorasi dan Produksi	Indonesia	Exploration and Production	
PT Pertamina International Shipping	Indonesia	Holding shares or other equity instruments	
PT Pertamina Irak Eksplorasi Produksi	Indonesia	Exploration and Production	
PT Pertamina Lubricants	Indonesia	Holding shares or other equity instruments	
PT Pertamina Malaysia Eksplorasi Produksi	Indonesia	Exploration and Production	
PT Pertamina Marine Engineering	Indonesia	Services	

c. Aktivitas Bisnis Indonesia (10/13)
Business Activities in Indonesia (10/13)

Pertamina Group Constituent Entities	Residence Tax Jurisdiction	Business Activity
PT Pertamina Marine Solution	Indonesia	Trading & Shipping
PT Pertamina Patra Niaga	Indonesia	Holding shares or other equity instruments, Fungsi Penelitian dan Pengembangan dan Perusahaan Induk
PT Pertamina Pedeve Indonesia	Indonesia	Holding shares or other equity instruments
PT Pertamina Petrochemical Trading	Indonesia	Perdagangan Besar Bahan dan Barang Kimia Dasar
PT Pertamina Port and Logistics	Indonesia	Holding shares or other equity instruments
PT Pertamina Power Indonesia	Indonesia	Holding shares or other equity instruments, Construction - Power Plant
PT Pertamina Retail	Indonesia	Perdagangan Besar Bahan Bakar Padat, Cair dan Gas dan Produk YBDI , Bright, NFR
PT Pertamina Rosneft Pengembangan kilang Pengolahan dan Petrokimia	Indonesia	Other
PT Pertamina Terminal Energy	Indonesia	other
PT Pertamina Training & Consulting	Indonesia	Holding shares or other equity instruments
PT Pertamina Trans Kontinental	Indonesia	Holding shares or other equity instruments
PT Perta-Samtan Gas	Indonesia	
PT Perusahaan Gas Negara Tbk	Indonesia	Holding shares or other equity instruments
PT PGAS Solution	Indonesia	

c. Aktivitas Bisnis Indonesia (11/13)
Business Activities in Indonesia (11/13)

Pertamina Group Constituent Entities	Residence Tax Jurisdiction	Business Activity
PT PGAS Telekomunikasi	Indonesia	
PT PGN LNG Indonesia	Indonesia	Insurance, Holding shares or other equity instruments
PT Pratama Mitra Sejati	Indonesia	Sewa gedung dan kendaraan
PT Prima Armada Raya	Indonesia	Insurance
PT Prima Citra Nutrindo	Indonesia	Jasa Katering atau Tata Boga
PT Rolas Nusantara Medika	Indonesia	Insurance, Holding shares or other equity instruments, Jasa Pelayanan Kesehatan
PT Rumah Sakit Pelabuhan	Indonesia	Jasa Pelayanan Kesehatan
PT Rumah Sakit Pelni	Indonesia	Holding shares or other equity instruments, Jasa Pelayanan Kesehatan
PT Saka Bangkanai Klemantan	Indonesia	Other - Holder of Participation Interest in Indonesian Oil and Gas Block (PSC)
PT Saka Eksplorasi Baru	Indonesia	Other - Holder of Participation Interest in Indonesian Oil and Gas Block (PSC)
PT Saka Eksplorasi Timur	Indonesia	Other - Holder of Participation Interest in Indonesian Oil and Gas Block (PSC) (effective per 30 May 2023)
PT Saka Eksplorasi Ventura	Indonesia	Other - Joint study of Indonesian Oil and Gas Block
PT Saka Energi Bangkanai Barat	Indonesia	Other - Holder of Participation Interest in Indonesian Oil and Gas Block (PSC)
PT Saka Energi Indonesia	Indonesia	Holding shares or other equity instruments

c. Aktivitas Bisnis Indonesia (12/13)
Business Activities in Indonesia (12/13)

Pertamina Group Constituent Entities	Residence Tax Jurisdiction	Business Activity
PT Saka Energi Internasional	Indonesia	Holding shares or other equity instruments, Holder of Participation Interest in Indonesian Oil and Gas Block (PSC)
PT Saka Energi Investama	Indonesia	Holding shares or other equity instruments, Holder of Participation Interest in Indonesian Oil and Gas Block (PSC)
PT Saka Energi Investasi	Indonesia	Holding shares or other equity instruments
PT Saka Energi Muara Bakau	Indonesia	Other - Holder of Participation Interest in Indonesian Oil and Gas Block (PSC)
PT Saka Energi Sepinggan	Indonesia	Other - Holder of Participation Interest in Indonesian Oil and Gas Block (PSC)
PT Saka Energi Sepinggan Timur	Indonesia	Other - Holder of Participation Interest in Indonesian Oil and Gas Block (PSC)
PT Saka Energi Sumatera	Indonesia	Other - Holder of Participation Interest in Indonesian Oil and Gas Block (PSC)
PT Saka Energi Wokam	Indonesia	Other - Holder of Participation Interest in Indonesian Oil and Gas Block (PSC)
PT Saka Energi Yamdena Barat	Indonesia	Other - Holder of Participation Interest in Indonesian Oil and Gas Block (PSC)
PT Saka Indonesia Sesulu	Indonesia	Other - Holder of Participation Interest in Indonesian Oil and Gas Block (PSC)
PT Saka Ketapang Perdana	Indonesia	Other - Holder of Participation Interest in Indonesian Oil and Gas Block (PSC)
PT Sigma Cipta Utama	Indonesia	Holding shares or other equity instruments
PT Solusi Energy Nusantara	Indonesia	Services
PT Synergy Risk Management Consultants	Indonesia	Usaha Jasa konsultan risiko manajemen

c. Aktivitas Bisnis Indonesia (13/13)
Business Activities in Indonesia (13/13)

Pertamina Group Constituent Entities	Residence Tax Jurisdiction	Business Activity
PT Telemedia Dinamika Sarana	Indonesia	Telecommunication Services
PT Trans Yeong Maritime	Indonesia	Trading
PT Trans-Pacific Processing and sale of oil and Petrochemical Indotama	Indonesia	Jasa Makloan (Tolling)
PT Transportasi Gas Indonesia	Indonesia	Trading
PT Tuban Petrochemical Industries	Indonesia	Holding shares or other equity instruments
PT Tugu Pratama Interindo	Indonesia	Holding shares or other equity instruments
PT Tugu Reasuransi Indonesia	Indonesia	Insurance (Jasa Reasuransi)
PT Widar Mandripa Nusantara	Indonesia	Other
Saka Energi Exploration Production B.V.	Indonesia	Holding shares or other equity instruments

2. Singapura

a. Ikhtisar Pajak

Singapura memiliki ekonomi pasar bebas yang sangat maju dan sukses. Ekonominya sangat bergantung pada kegiatan ekspor, terutama produk teknologi informasi dan farmasi, serta sektor jasa keuangan yang dinamis.

Dalam jangka panjang, pemerintah bertujuan untuk menetapkan jalur baru yang berfokus pada inovasi dan penciptaan nilai. Singapura telah menarik banyak investasi di berbagai industri.

Pertamina melalui anak usahanya (subholding integrated marine & logistic) melakukan ekspansi bisnis di Singapura antara lain berupa pelayaran pengangkutan migas, dan mengembangkan cakupan muatan angkutan, serta melakukan kemitraan dengan sesama Grup Pertamina maupun perusahaan energi lainnya.

Pertamina International Shipping Pte Ltd memiliki lebih dari 400 kapal, 6 terminal penyimpanan bahan bakar dan LPG, serta mengoperasikan 140 pelabuhan.

2. Singapore

a. Tax Overview

Singapore has a highly developed and booming free-market economy. The economy depends heavily on exports, particularly in information technology products and pharmaceuticals, as well as a vibrant financial services sector.

Over the longer term, the government aims to establish a new path focusing on innovation and value creation. Singapore has attracted many investments in industries.

Pertamina, through its subsidiary (Subholding Integrated Marine & Logistic), is expanding its business in Singapore, including oil and gas transportation shipping, and broadening the scope of transport loads, as well as forming partnerships with other Pertamina Group companies and other energy companies.

Pertamina International Shipping Pte Ltd owns more than 400 vessels, 6 fuel and LPG storage terminals and operates 140 ports.

b. Data CbCR Singapura Desember Tahun 2022
The CbCR Data of Singapore in December 2022

Data dalam ratusan juta dollar
Data in hundred million dollar

Jurisdiction	Revenues - Unrelated Party	Revenues - Related Party	Revenues - Total	Profit (Loss) before Income Tax	Income Tax Paid (on a cash basis)	Income Tax Accrued - Current Year	Stated Capital	Accumulated Earnings	Number of Employees	Tangible Assets other than Cash and Cash Equivalents
Singapura	4.620.368,97	685.875,84	5.306.244,81	(50.525,68)	2.900,37	-	29.037,78	(72.667,80)	34	259.094,84
Entities di Negara Singapura										
Pertamina International Marketing and Distribution Pte. Ltd.	4.509.164,27	492.467,05	5.001.631,32	(86.140,06)	-	-	13.000,00	(121.582,72)	24	23.673,12
Pertamina International Shipping Pte. Ltd.	101.099,24	193.408,80	294.508,03	33.478,21	2.900,37	-	8.164,54	39.334,02	10	191.221,04
PIS Paragon Pte., Ltd.	5.138,21	-	5.138,21	839,27	-	-	3.786,62	4.268,64	-	15.613,15
PIS Polaris Pte., Ltd.	4.960,00	-	4.960,00	1.337,59	-	-	4.086,62	4.481,66	-	14.066,48
Saka Energi Asia Pte. Ltd.	-	-	-	(13,42)	-	-	-	(7.807,27)	-	-
Saka Energi East Kalimantan Pte. Ltd.	-	-	-	(15,58)	-	-	-	135,74	-	-
Saka Energi Sanga Star Pte. Ltd.	-	-	-	(14,69)	-	-	-	(466,36)	-	-
Saka Energi Sanga-sanga Ltd.	7,25	-	7,25	3,00	-	-	-	8.968,49	-	14.521,05

Kurs Neraca: 12.441
per 1 Januari 2015

Berdasarkan Lampiran Peraturan Direktorat Jenderal Pajak Nomor 29/PJ/2017 tentang Tata Cara Pengelolaan laporan Per Negara

Exchange Rate: 12,441
as of January 1, 2015

According to the Appendix of the Directorate General of Taxes Regulation Number 29/PJ/2017 concerning the Procedures for Managing Country Reports

c. Aktivitas Bisnis Singapura
Business Activities in Singapore

Pertamina Group Constituent Entities	Residence Tax Jurisdiction	Business Activity
Pertamina International Marketing and Distribution Pte. Ltd.	Singapura	Services and Trading Oil
Pertamina International Shipping Pte.	Singapura	Services and Trading Oil
PIS Paragon Pte., Ltd.	Singapura	Production
PIS Polaris Pte., Ltd.	Singapura	Production
Saka Energi Asia Pte. Ltd.	Singapura	Holding shares or other equity instruments
Saka Energi East Kalimantan Pte. Ltd.	Singapura	Holding shares or other equity instruments
Saka Energi Sanga Star Pte. Ltd.	Singapura	Holding shares or other equity instruments
Saka Energi Sanga-Sanga Ltd.	Singapura	Holder of Participation Interest in Indonesian Oil and Gas Block (PSC)

3. Timor Leste

a. Ikhtisar Pajak

Pertamina International Timor SA menonjol sebagai entitas utama dalam perdagangan minyak. Dengan total pendapatan sebesar \$77,317.20, terdiri dari \$75,031.29 dari transaksi dengan pihak tidak terafiliasi dan \$2,285.92 dari pihak terafiliasi, perusahaan ini menunjukkan performa keuangan yang solid. Keuntungan sebelum pajak tercatat sebesar \$12,822.23, sementara pajak yang dibayar adalah \$352.65, dengan pajak yang diakumulasi tahun ini sebesar \$678.08. Modal yang dinyatakan adalah \$2,007.89, dengan laba ditahan mencapai \$43,158.50. Perusahaan ini mempekerjakan 19 orang dan memiliki aset berwujud selain kas sebesar \$5,611.37.

Secara keseluruhan, Pertamina International Timor SA menunjukkan kinerja yang stabil di sektor perdagangan minyak di Timor Leste, mencerminkan efisiensi operasional dan kapasitas investasi yang baik.

3. Timor-Leste

a. Tax Overview

Pertamina International Timor SA is a critical entity in the oil trading sector. The company demonstrates solid financial performance with total revenue amounting to \$77,317.20, consisting of \$75,031.29 from transactions with non-affiliated parties and \$2,285.92 from affiliated parties. The pre-tax profit is \$12,822.23, while taxes paid amount to \$352.65, with accumulated yearly taxes at \$678.08. The stated capital is \$2,007.89, with retained earnings reaching \$43,158.50. The company employs 19 people and has tangible assets, excluding cash, amounting to \$5,611.37.

Overall, Pertamina International Timor SA shows stable performance in the oil trading sector in Timor-Leste, reflecting operational efficiency and strong investment capacity.

b. Data CbCR Timor Leste Desember Tahun 2022
The CbCR Data of Timor Leste in December 2022

Data dalam ratusan juta dollar

Data in hundred million dollar

Name	Revenues - Unrelated Party	Revenues - Related Party	Revenues - Total	Profit (Loss) before Income Tax	Income Tax Paid (on a cash basis)	Income Tax Accrued - Current Year	Stated Capital	Accumulated Earnings	Number of Employees (Number)	Tangible Assets other than Cash and Cash Equivalents
Timor Leste	75,031.29	2,285.92	77,317.20	12,822.23	352.65	678.08	2,007.89	43,158.50	19	5,611.37
Entitas di Timor Leste										
PT Pertamina International Timor SA	75,031.29	2,285.92	77,317.20	12,822.23	352.65	678.08	2,007.89	43,158.50	19	5,611.37

Kurs Neraca: 12.441

per 1 Januari 2015

Berdasarkan Lampiran Peraturan Direktorat Jenderal Pajak Nomor 29/PJ/2017 tentang Tata Cara Pengelolaan laporan Per Negara

Exchange Rate: 12,441

as of January 1, 2015

According to the Appendix of the Directorate General of Taxes Regulation Number 29/PJ/2017 concerning the Procedures for Managing Country Reports

c. Aktivitas Bisnis Timor Leste

Business Activities in Timor-Leste

Pertamina Group Constituent Entities	Residence Tax Jurisdiction	Business Activity
Pertamina International Timor SA	Timor Leste	Trading Oil

4. Hongkong

a. Ikhtisar Pajak

Tugu Insurance Company Limited merupakan entitas yang paling signifikan di Hong Kong, dengan fokus pada layanan asuransi dan kontribusi penting dalam portofolio Pertamina Group, sementara Bentang Energi Indonesia Ltd. dan Saka Energi International Ventures Ltd. berfungsi dalam kapasitas yang lebih terbatas.

- Tugu Insurance Company Limited adalah entitas utama dengan total pendapatan \$18,818.33, seluruhnya berasal dari pihak tidak terafiliasi. Meskipun perusahaan mengalami kerugian sebelum pajak sebesar \$(16,881.64), modal yang dinyatakan adalah \$103,955.15 dan laba ditahan sebesar \$14,693.52. Aset berwujud selain kas mencapai \$162,105.67. Pajak penghasilan tidak dibayar selama periode ini.
- Bentang Energi Indonesia Ltd. dan Saka Energi International Ventures Ltd. masing-masing mencatatkan pendapatan yang sangat kecil dan kerugian sebelum pajak, dengan modal yang dinyatakan masing-masing \$675.91 dan \$1,086.88. Keduanya tidak melaporkan pajak penghasilan yang dibayar atau diakumulasi, menyoroti status mereka yang relatif minor dalam operasi keuangan.

4. Hongkong

a. Tax Overview

Tugu Insurance Company Limited is the most significant entity in Hong Kong, focusing on insurance services and making a substantial contribution to Pertamina Group's portfolio. At the same time, Bentang Energi Indonesia Ltd. and Saka Energi International Ventures Ltd. operate in a more limited capacity.

- Tugu Insurance Company Limited is the primary entity with a total revenue of \$18,818.33, all derived from non-affiliated parties. Although the company experienced a pre-tax loss of \$(16,881.64), the stated capital is \$103,955.15 and retained earnings are \$14,693.52. Tangible assets, excluding cash, amount to \$162,105.67. No income tax was paid during this period.
- Bentang Energi Indonesia Ltd. and Saka Energi International Ventures Ltd. each recorded minimal revenues and pre-tax losses, with stated capital of \$675.91 and \$1,086.88, respectively. Both did not report any paid or accumulated income taxes, highlighting their relatively minor status in financial operations.

b. Data CbCR Hongkong Desember Tahun 2022 The CbCR Data of Hongkong in December 2022

Data dalam ratusan juta dollar

Data in hundred million dollar

Name	Revenues - Unrelated Party	Revenues - Related Party	Revenues - Total	Profit (Loss) before Income Tax	Income Tax Paid (on a cash basis)	Income Tax Accrued - Current Year	Stated Capital	Accumulated Earnings	Number of Employees (Number)	Tangible Assets other than Cash and Cash Equivalents
Hongkong	13,475.68	5,342.65	18,818.33	(16,885.05)	-	-	103,955.25	16,456.31	-	162,105.67
Entitas di Hongkong										
Bentang Energi Indonesia Ltd.		-	-	9.21	-	-	0.10	675.91	-	-
Saka Energi International Ventures Ltd.		-	-	(12.61)	-	-	-	1,086.88	-	-
Tugu Insurance Company Limited	13,475.68	5,342.65	18,818.33	(16,881.64)	-	-	103,955.15	14,693.52	-	162,105.67

Kurs Neraca: 12.441

per 1 Januari 2015

Berdasarkan Lampiran Peraturan Direktorat Jenderal Pajak Nomor 29/PJ/2017 tentang Tata Cara Pengelolaan laporan Per Negara

Exchange Rate: 12,441

as of January 1, 2015

According to the Appendix of the Directorate General of Taxes Regulation Number 29/PJ/2017 concerning the Procedures for Managing Country Reports

c. Aktivitas Bisnis Hongkong Business Activities in Hongkong

Pertamina Group Constituent Entities	Residence Tax Jurisdiction	Business Activity
Bentang Energi Indonesia Ltd.	Hongkong	Regulated Financial Services
Saka Energi International Ventures Ltd.	Hongkong	Holder of Participation Interest in Indonesian Oil and Gas Block (PSC)
Tugu Insurance Company Limited	Hongkong	Insurance

5. Jepang

a. Ikhtisar Pajak

PPT Energy Trading Co., Ltd. di Jepang berfokus pada layanan pengadaan energi dengan hasil keuangan yang solid. Perusahaan ini melaporkan total pendapatan sebesar \$259.91. Meskipun perusahaan tidak membayar pajak penghasilan dalam bentuk kas, pajak yang diakumulasi selama periode ini mencapai \$40.23.

Perusahaan mencatatkan keuntungan sebelum pajak sebesar \$5,605.32, menunjukkan efisiensi dalam operasionalnya. Modal yang dinyatakan sebesar \$1,000.00 dan laba ditahan sebesar \$5,544.44 mencerminkan posisi keuangan yang sehat. Dengan jumlah karyawan sebanyak 12 orang dan aset berwujud selain kas mencapai \$1,804.07, PPT Energy Trading Co., Ltd. mencerminkan manajemen keuangan yang baik dan keberlanjutan operasional dalam sektor pengadaan energi di Jepang.

5. Japan

a. Tax Overview

PPT Energy Trading Co., Ltd. in Japan focuses on energy procurement services with solid financial results. The company reported a total revenue of \$259.91. Although the company did not pay income taxes in cash, accumulated taxes for the period amounted to \$40.23.

The company recorded a pre-tax profit of \$5,605.32, demonstrating operational efficiency. The stated capital of \$1,000.00 and retained earnings of \$5,544.44 reflect a healthy financial position. With a workforce of 12 employees and tangible assets excluding cash amounting to \$1,804.07, PPT Energy Trading Co., Ltd. showcases good economic management and operational sustainability in the energy procurement sector in Japan.

b. Data CbCR Jepang Desember Tahun 2022
The CbCR Data of Japan in December 2022

Data dalam ratusan juta dollar

Data in hundred million dollar

Name	Revenues - Unrelated Party	Revenues - Related Party	Revenues - Total	Profit (Loss) before Income Tax	Income Tax Paid (on a cash basis)	Income Tax Accrued - Current Year	Stated Capital	Accumulated Earnings	Number of Employees (Number)	Tangible Assets other than Cash and Cash Equivalents
Jepang	259.91	-	259.91	5,605.32	-	40.23	1,000.00	5,544.44	12.00	1,804.07
Entitas di Jepang										
PPT Energy Trading Co., Ltd	259.91	-	259.91	5,605.32	-	40.23	1,000.00	5,544.44	12.00	1,804.07

Kurs Neraca: 12.441

per 1 Januari 2015

Berdasarkan Lampiran Peraturan Direktorat Jenderal Pajak Nomor 29/PJ/2017 tentang Tata Cara Pengelolaan laporan Per Negara

Exchange Rate: 12,441

as of January 1, 2015

According to the Appendix of the Directorate General of Taxes Regulation Number 29/PJ/2017 concerning the Procedures for Managing Country Reports

c. Aktivitas Bisnis Jepang
Business Activities in Japan

Pertamina Group Constituent Entities	Residence Tax Jurisdiction	Business Activity
PPT Energy Trading Co., Ltd	Jepang	Purchasing or Procurement

6. Prancis

a. Ikhtisar Pajak

Maurel & Prom adalah perusahaan eksplorasi dan produksi minyak serta gas yang terdaftar di pasar yang diatur Euronext Paris. Dengan sejarah hampir dua abad, Maurel & Prom memiliki kompetensi teknis yang solid dan pengalaman operasional yang panjang, baik di markas besar di Paris maupun di anak-anak perusahaannya, terutama di Afrika. Dalam 20 tahun terakhir, setelah memfokuskan diri secara eksklusif pada eksplorasi dan produksi minyak dan gas, Maurel & Prom telah melakukan beberapa penemuan signifikan, terutama di Cekungan Kongo, dan telah berhasil berpartisipasi sebagai operator dalam pengembangan atau re-develop sejumlah besar aset di Kongo, Kolombia, Gabon, Tanzania, dan Nigeria. tidak membayar pajak penghasilan dalam bentuk kas, pajak yang diakumulasi selama periode ini mencapai \$40.23.

6. France

a. Tax Overview

Maurel & Prom is an oil and gas exploration and production company listed on the regulated market of Euronext Paris. With a history spanning nearly two centuries, Maurel & Prom possesses solid technical expertise and extensive operational experience, both at its headquarters in Paris and through its subsidiaries, particularly in Africa. Over the past 20 years, by focusing exclusively on oil and gas exploration and production, Maurel & Prom has made several significant discoveries, particularly in the Congo Basin, and has successfully participated as an operator in the development or redevelopment of numerous assets in Congo, Colombia, Gabon, Tanzania, and Nigeria.

b. Data CbCR Prancis Desember Tahun 2022
The CbCR Data of France in December 2022

Data dalam ratusan juta dollar

Data in hundred million dollar

Name	Revenues - Unrelated Party	Revenues - Related Party	Revenues - Total	Profit (Loss) before Income Tax	Income Tax Paid (on a cash basis)	Income Tax Accrued - Current Year	Stated Capital	Accumulated Earnings	Number of Employees	Tangible Assets other than Cash and Cash Equivalents
Prancis	499,665.56		499,665.56	164,630.27	79,358.04	-	223,397.73	366,312.12	595.00	1,490,942.77
Entitas di Prancis										
Etablissements Maurel et Prom S	499,665.56		499,665.56	164,630.27	79,358.04	-	223,397.73	366,312.12	595.00	1,490,942.77

Kurs Neraca: 12.441

per 1 Januari 2015

Berdasarkan Lampiran Peraturan Direktorat Jenderal Pajak Nomor 29/PJ/2017 tentang Tata Cara Pengelolaan laporan Per Negara

Exchange Rate: 12,441

as of January 1, 2015

According to the Appendix of the Directorate General of Taxes Regulation Number 29/PJ/2017 concerning the Procedures for Managing Country Reports

c. Aktivitas Bisnis Prancis
Business Activities in France

Pertamina Group Constituent Entities	Residence Tax Jurisdiction	Business Activity
Établissements Maurel & Prom S.A.	France	Consolidated entity, Mining rights owned or managed, Sale of hydrocarbons, Exploration for liquid and gaseous hydrocarbons

7. Belanda

a. Ikhtisar Pajak

Natuna 2 B.V. muncul sebagai mitra pasif dalam usaha patungan, dengan laba sebelum pajak sebesar \$67,525.00. Meskipun tidak melaporkan pendapatan, entitas ini menunjukkan kekuatan finansial melalui modal yang dinyatakan sebesar \$21,048.00 dan laba ditahan sebesar \$35,092.00. Aset berwujud selain kas, yang mencapai \$99,598.00, menggambarkan investasi substansial dalam operasionalnya.

Saka Energi Overseas Holding B.V. beroperasi sebagai entitas holding dengan fokus pada saham dan instrumen ekuitas. Dengan mencatatkan rugi sebelum pajak sebesar \$(59.49) dan modal yang hanya \$1.00, perusahaan ini berada dalam tahap penyesuaian strategis atau restrukturisasi. Laba ditahan negatif \$(372.94) dan ketiadaan pajak penghasilan menunjukkan dinamika keuangan yang sedang diperbaiki.

7. Netherlands

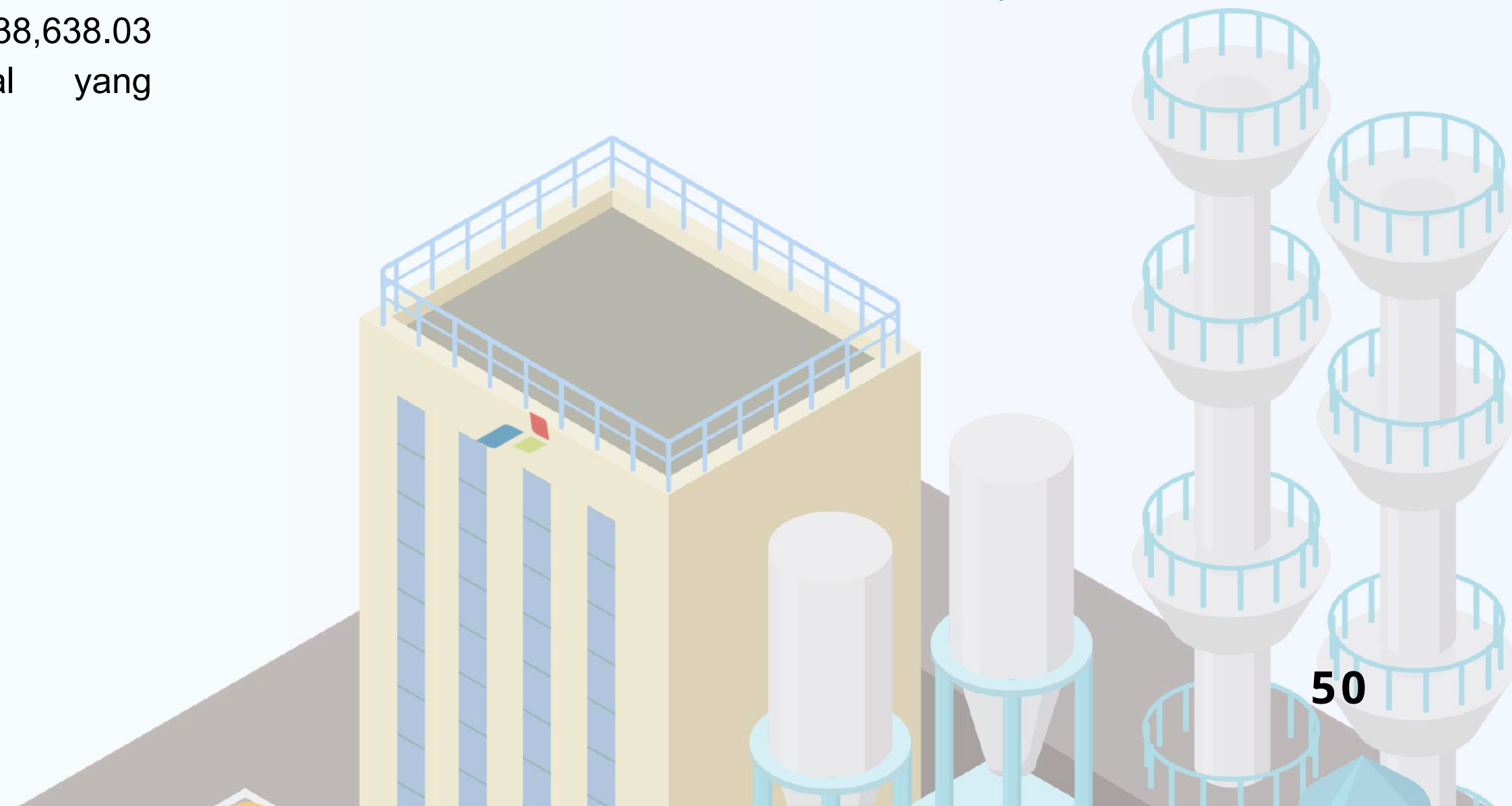
a. Tax Overview

Natuna 2 B.V. emerges as a passive partner in a joint venture, with a pre-tax profit of \$67,525.00. Although it does not report any revenue, this entity demonstrates financial strength with a stated capital of \$21,048.00 and retained earnings of \$35,092.00. Tangible assets, excluding cash, amounting to \$99,598.00, reflect substantial investment in its operations.

Saka Energi Overseas Holding B.V. is a holding entity focusing on shares and equity instruments. Recording a pre-tax loss of \$(59.49) and having minimal capital of \$1.00, the company is in a phase of strategic adjustment or restructuring. Negative retained earnings of \$(372.94) and the absence of income tax paid indicate ongoing financial dynamics being addressed.

Saka Indonesia Pangkah B.V. memainkan peran kunci sebagai pemegang kepentingan dalam blok minyak dan gas di Indonesia. Perusahaan ini melaporkan pendapatan dari pihak tidak terafiliasi sebesar \$91,548.35 dan laba sebelum pajak sebesar \$34,199.76. Dengan pajak penghasilan yang dibayar sebesar \$8,087.41, serta modal yang dinyatakan sebesar \$23.35 dan laba ditahan sebesar \$136,761.30, perusahaan ini menunjukkan kesehatan finansial yang kuat. Investasi dalam aset berwujud selain kas yang mencapai \$138,638.03 menegaskan komitmen terhadap operasional yang berkelanjutan.

Saka Indonesia Pangkah B.V. is a crucial stakeholder in Indonesia's oil and gas blocks. The company reported revenue from non-affiliated parties of \$91,548.35 and a pre-tax profit of \$34,199.76. The company demonstrates financial solid health with income tax paid amounting to \$8,087.41, stated capital of \$23.35, and retained earnings of \$136,761.30. Investment in tangible assets, excluding cash, amounting to \$138,638.03, underscores its commitment to sustainable operations.



b. Data CbCR Belanda Desember Tahun 2022
The CbCR Data of Netherlands in December 2022

Data dalam ratusan juta dollar

Data in hundred million dollar

Name	Revenues - Unrelated Party	Revenues - Related Party	Revenues - Total	Profit (Loss) before Income Tax	Income Tax Paid (on a cash basis)	Income Tax Accrued - Current Year	Stated Capital	Accumulated Earnings	Number of Employees	Tangible Assets other than Cash and Cash Equivalents
Belanda	91,548.35	-	243,290.35	101,665.27	8,087.41	-	21,072.35	171,480.36	-	238,236.03
Entitas di Belanda										
Natuna 2 B.V., Belanda	-	-	151,742.00	67,525.00	-	-	21,048.00	35,092.00	-	99,598.00
Saka Energi Overseas Holding I	-	-	-	(59.49)	-	-	1.00	(372.94)	-	-
Saka Indonesia Pangkah B.V	91,548.35	-	91,548.35	34,199.76	8,087.41	-	23.35	136,761.30	-	138,638.03

Kurs Neraca: 12.441

per 1 Januari 2015

Berdasarkan Lampiran Peraturan Direktorat Jenderal Pajak Nomor 29/PJ/2017 tentang Tata Cara Pengelolaan laporan Per Negara

Exchange Rate: 12,441

as of January 1, 2015

According to the Appendix of the Directorate General of Taxes Regulation Number 29/PJ/2017 concerning the Procedures for Managing Country Reports

c. Aktivitas Bisnis Belanda
Business Activities in Netherlands

Pertamina Group Constituent Entities	Residence Tax Jurisdiction	Business Activity
Natuna 2 B.V., Belanda	Belanda	Silent partner dalam joint ventures
Saka Energi Overseas Holding B.V.	Belanda	Holding shares or other equity instruments
Saka Indonesia Pangkah B.V	Belanda	Holder of Participation Interest in Indonesian Oil and Gas Block (PSC)

8. Gabon

a. Ikhtisar Pajak

Sebagai bagian dari kebijakan Transisi Energi dan Iklim, Gabon terus bekerja untuk mengurangi emisi gas rumah kaca. Gabon telah berhasil mengurangi emisi metana sebesar 95% antara awal dan akhir tahun 2022 dan saat ini memiliki tingkat emisi (cakupan 1 dan 2) sebesar 20 kilogram CO₂ per barel. Ambisinya yaitu menurunkannya menjadi 15 bahkan 10 kilogram.

Beberapa proyek di Gabon yang bertujuan untuk mengurangi jejak karbon, seperti menghubungkan semua lokasi sumur ke jaringan listrik Onal dan menggunakan gas produksi untuk mengoperasikan lokasi Coucal. Hal ini akan terus berupaya mengurangi emisi sepanjang tahun 2023, dengan studi kompensasi karbon dan penyimpanan gas yang sedang dilakukan di Gabon.

Beberapa proyek di Gabon yang bertujuan untuk mengurangi jejak karbon, seperti menghubungkan semua lokasi sumur ke jaringan listrik Onal dan menggunakan gas produksi untuk mengoperasikan lokasi Coucal. Hal ini akan terus berupaya mengurangi emisi sepanjang tahun 2023, dengan studi kompensasi karbon dan penyimpanan gas yang sedang dilakukan di Gabon.

8. Gabon

a. Tax Overview

As part of the Energy and Climate Transition policy, Gabon continues to work on reducing greenhouse gas emissions. Gabon successfully reduced methane emissions by 95% between the beginning and end of 2022 and currently has an emission rate (scope 1 and 2) of 20 kilograms of CO₂ per barrel. The ambition is to reduce this to 15 or even 10 kilograms.

Several projects in Gabon aim to reduce the carbon footprint, such as connecting all good sites to the Onal electricity grid and using production gas to operate the Coucal site. These efforts will continue throughout 2023, with carbon offset and gas storage studies being conducted in Gabon.

As last year demonstrated again the importance of raw material and energy supply, we continue to deploy our knowledge and experience to produce with the highest responsibility and follow our industry's highest environmental, operational, and financial standards.

b. Data CbCR Gabon Desember Tahun 2022

The CbCR Data of Gabon in December 2022

Data dalam ratusan juta dollar

Data in hundred million dollar

Jurisdiction	Revenues - Unrelated Party	Revenues - Related Party	Revenues - Total	Profit (Loss) before Income Tax	Income Tax Paid (on a cash basis)	Income Tax Accrued - Current Year	Stated Capital	Accumulated Earnings	Number of Employees	Tangible Assets other than Cash and Cash Equivalents
Gabon	276,262.99	-	276,262.99	98,427.31	24,262.22	-	27,469.51	(106,843.13)	286	414,774.58
Entitas di Gabon										
Saka Indonesia Pangkah Limited	239,338.09	-	239,338.09	85,628.66	21,027.25	-	27,467.62	(124,554.12)	286	357,642.18
Saka Pangkah LLC	36,924.90	-	36,924.90	12,798.65	3,234.96	-	1.11	17,711.80	-	57,132.40
TRB (London) Limited		-	-	-	-	-	0.78	(0.81)	-	-

Kurs Neraca: 12.441

per 1 Januari 2015

Berdasarkan Lampiran Peraturan Direktorat Jenderal Pajak Nomor 29/PJ/2017 tentang Tata Cara Pengelolaan laporan Per Negara

Exchange Rate: 12,441

as of January 1, 2015

According to the Appendix of the Directorate General of Taxes Regulation Number 29/PJ/2017 concerning the Procedures for Managing Country Reports

c. Aktivitas Bisnis Gabon

Business Activities in Gabon

Pertamina Group Constituent Entities	Residence Tax Jurisdiction	Business Activity
Saka Indonesia Pangkah Limited	Gabon	Holder of Participation Interest in Indonesian Oil and Gas Block (PSC)
Saka Pangkah LLC	Gabon	Holder of Participation Interest in Indonesian Oil and Gas Block (PSC)
TRB (London) Limited	Gabon	Holder of Participation Interest in Indonesian Oil and Gas Block (PSC)

9. Libya

a. Ikhtisar Pajak

Peran PE&P Libya Ltd dalam jaringan Pertamina Group saat ini adalah menyediakan layanan yang belum aktif atau dormant, menunggu peluang atau perubahan kondisi pasar yang memungkinkan untuk melanjutkan operasinya. Meskipun demikian, adanya laba ditahan yang signifikan menunjukkan potensi perusahaan untuk kembali beroperasi di masa depan jika kondisi memungkinkan.

Keberadaan P E&P Libya Ltd di Libya mencerminkan strategi Pertamina untuk tetap mempertahankan entitas bisnis di berbagai wilayah, siap untuk mengambil peluang ketika pasar energi di Libya stabil dan kondusif untuk operasi lebih lanjut.

Modal yang dinyatakan oleh perusahaan tercatat sebesar \$0.10, menunjukkan adanya aktivitas keuangan minimal. Meskipun demikian, P E&P Libya Ltd memiliki laba ditahan sebesar \$114,150.24. Tidak ada informasi mengenai jumlah karyawan atau aset berwujud selain kas dan setara kas, menandakan operasi yang sangat terbatas atau tidak ada aktivitas operasional sama sekali.

9. Libya

a. Tax Overview

The role of PE&P Libya Ltd within the Pertamina Group network is to provide inactive or dormant services, awaiting opportunities or changes in market conditions that would allow for the resumption of its operations. Nevertheless, significant retained earnings indicate the company's potential to resume operations in the future if conditions permit.

The presence of E&P Libya Ltd in Libya reflects Pertamina's strategy to maintain business entities in various regions, ready to seize opportunities when the energy market in Libya stabilizes and becomes conducive to further operations.

The company's stated capital is recorded at \$0.10, indicating minimal financial activity. Nonetheless, PE&P Libya Ltd has retained earnings of \$114,150.24. More information on the number of employees or tangible assets other than cash and cash equivalents is needed, indicating very limited or no operational activity.

b. Data CbCR Libya Desember Tahun 2022
The CbCR Data of Libya in December 2022

Data dalam ratusan juta dollar
Data in hundred million dollar

Jurisdiction	Revenues - Unrelated Party	Revenues - Related Party	Revenues - Total	Profit (Loss) before Income Tax	Income Tax Paid (on a cash basis)	Income Tax Accrued - Current Year	Stated Capital	Accumulated Earnings	Number of Employees	Tangible Assets other than Cash and Cash Equivalents
Libya	-	-	-	-	-	-	0.10	114,150.24	-	-
Entitas di Libya										
P E&P Libya Ltd	-	-	-	-	-	-	0.10	114,150.24	-	-

Kurs Neraca: 12.441
per 1 Januari 2015
 Berdasarkan Lampiran Peraturan Direktorat Jenderal Pajak Nomor 29/PJ/2017 tentang Tata Cara Pengelolaan laporan Per Negara

Exchange Rate: 12,441
as of January 1, 2015
 According to the Appendix of the Directorate General of Taxes Regulation Number 29/PJ/2017 concerning the Procedures for Managing Country Reports

c. Aktivitas Bisnis Libya
Business Activities in Libya

Pertamina Group Constituent Entities	Residence Tax Jurisdiction	Business Activity
P E&P Libya Ltd	Libya	Services

10. Amerika Serikat

a. Ikhtisar Pajak

Pada tahun 2022, Saka Energi Fasken LLC, entitas Pertamina Group yang beroperasi di Amerika Serikat, mencatatkan total pendapatan sebesar \$57,945.21. Dengan laba sebelum pajak penghasilan sebesar \$48,344.88, perusahaan menunjukkan kinerja keuangan yang kuat. Meskipun demikian, pajak penghasilan yang dibayarkan hanya sebesar \$4,771.68, menghasilkan tingkat pajak efektif sekitar 9.87%.

Saka Energi Fasken LLC memegang kepentingan partisipasi dalam blok minyak dan gas di Indonesia, menunjukkan peran strategisnya dalam mendukung operasi Pertamina di sektor energi global. Perusahaan memiliki aset berwujud selain kas dan setara kas sebesar \$167,877.86, menandakan investasi yang signifikan dalam infrastruktur fisik yang mungkin berkaitan dengan operasi minyak dan gasnya.

10. United States

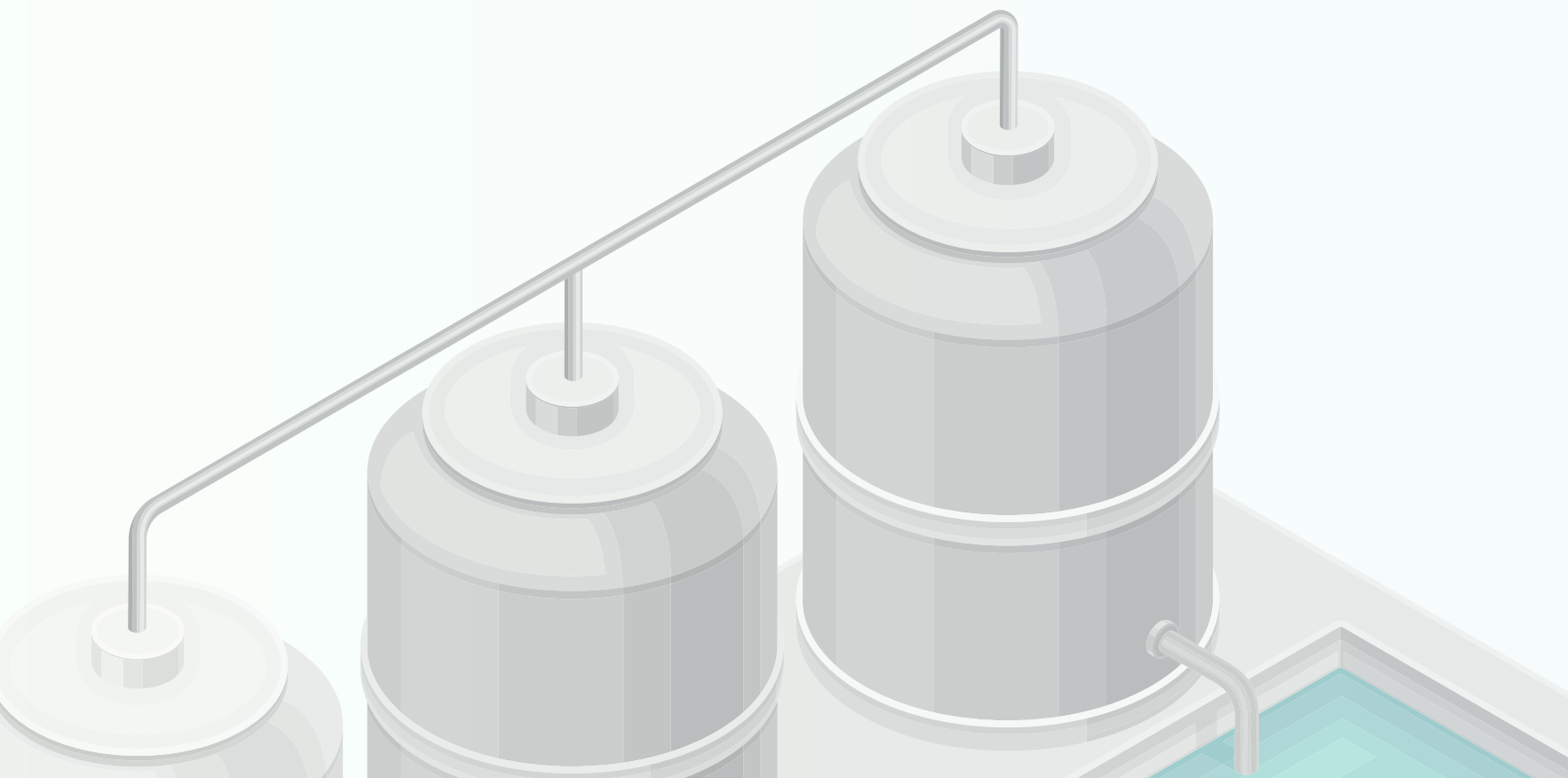
a. Tax Overview

In 2022, Saka Energi Fasken LLC, a Pertamina Group entity operating in the United States, recorded a total revenue of \$57,945.21. The company demonstrated strong financial performance with a pre-tax profit of \$48,344.88. However, income taxes paid were only \$4,771.68, resulting in an effective tax rate of approximately 9.87%.

Saka Energi Fasken LLC holds participating interests in oil and gas blocks in Indonesia, highlighting its strategic role in supporting Pertamina's operations in the global energy sector. The company has tangible assets, excluding cash and cash equivalents, amounting to \$167,877.86, indicating significant investment in physical infrastructure likely related to its oil and gas operations.

Keberhasilan finansial ini tidak hanya mencerminkan efisiensi operasional tetapi juga kemampuan perusahaan untuk mengoptimalkan beban pajak, menjadikan Saka Energy Fasken LLC sebagai contoh entitas yang berhasil memanfaatkan peluang di sektor energi dengan bijak. Dengan laba ditahan sebesar \$64,794.66, perusahaan menunjukkan kesiapan untuk investasi lebih lanjut dan pertumbuhan di masa depan, menjadikan tahun 2022 sebagai tonggak penting dalam perjalanan bisnisnya.

This financial success reflects operational efficiency and the company's ability to optimize its tax burden, making Saka Energy Fasken LLC as an example of an entity effectively leveraging opportunities in the energy sector. With retained earnings of \$64,794.66, the company shows readiness for further investment and growth, marking 2022 as a significant milestone in its business journey.



b. Data CbCR Amerika Serikat Desember Tahun 2022
The CbCR Data of United States in December 2022

Data dalam ratusan juta dollar

Data in hundred million dollar

Name	Revenues - Unrelated Party	Revenues - Related Party	Revenues - Total	Profit (Loss) before Income Tax	Income Tax Paid (on a cash basis)	Income Tax Accrued - Current Year	Stated Capital	Accumulated Earnings	Number of Employees (Number)	Tangible Assets other than Cash and Cash Equivalents
US	57,945.21		57,945.21	48,344.88	4,771.68			64,794.66		167,877.86
Entitas di US										
Saka Energy Fasken LLC	57,945.21		57,945.21	48,344.88	4,771.68			64,794.66		167,877.86

Kurs Neraca: 12.441

per 1 Januari 2015

Berdasarkan Lampiran Peraturan Direktorat Jenderal Pajak Nomor 29/PJ/2017 tentang Tata Cara Pengelolaan Laporan Per Negara

Exchange Rate: 12,441

as of January 1, 2015

According to the Appendix of the Directorate General of Taxes Regulation Number 29/PJ/2017 concerning the Procedures for Managing Country Reports

c. Aktivitas Bisnis Amerika Serikat
Business Activities in United States

Pertamina Group Constituent Entities	Residence Tax Jurisdiction	Business Activity
Saka Energy Fasken LLC	Amerika Serikat	-

11. Virgin Island (British)

a. Ikhtisar Pajak

Saka Energi Muriah Limited, entitas Pertamina Group yang berbasis di British Virgin Islands (BVI), berhasil mencatatkan total pendapatan sebesar \$27,806.95. Perusahaan ini mampu menghasilkan laba sebelum pajak penghasilan sebesar \$5,919.06, menunjukkan profitabilitas yang menjanjikan di tengah dinamika industri energi. Menariknya, perusahaan tidak membayar pajak penghasilan pada basis kas, yang mungkin mencerminkan kebijakan pajak yang menguntungkan di BVI atau adanya pengaturan perpajakan yang efektif.

Dengan modal yang dinyatakan sebesar \$52,307.20 dan laba ditahan negatif sebesar \$(21,564.93), Saka Energi Muriah Limited menunjukkan struktur keuangan yang kompleks namun tetap solid. Perusahaan memiliki aset berwujud selain kas dan setara kas sebesar \$5,884.54, menandakan investasi signifikan dalam infrastruktur fisik yang mendukung operasi minyak dan gasnya.

11. Virgin Island (British)

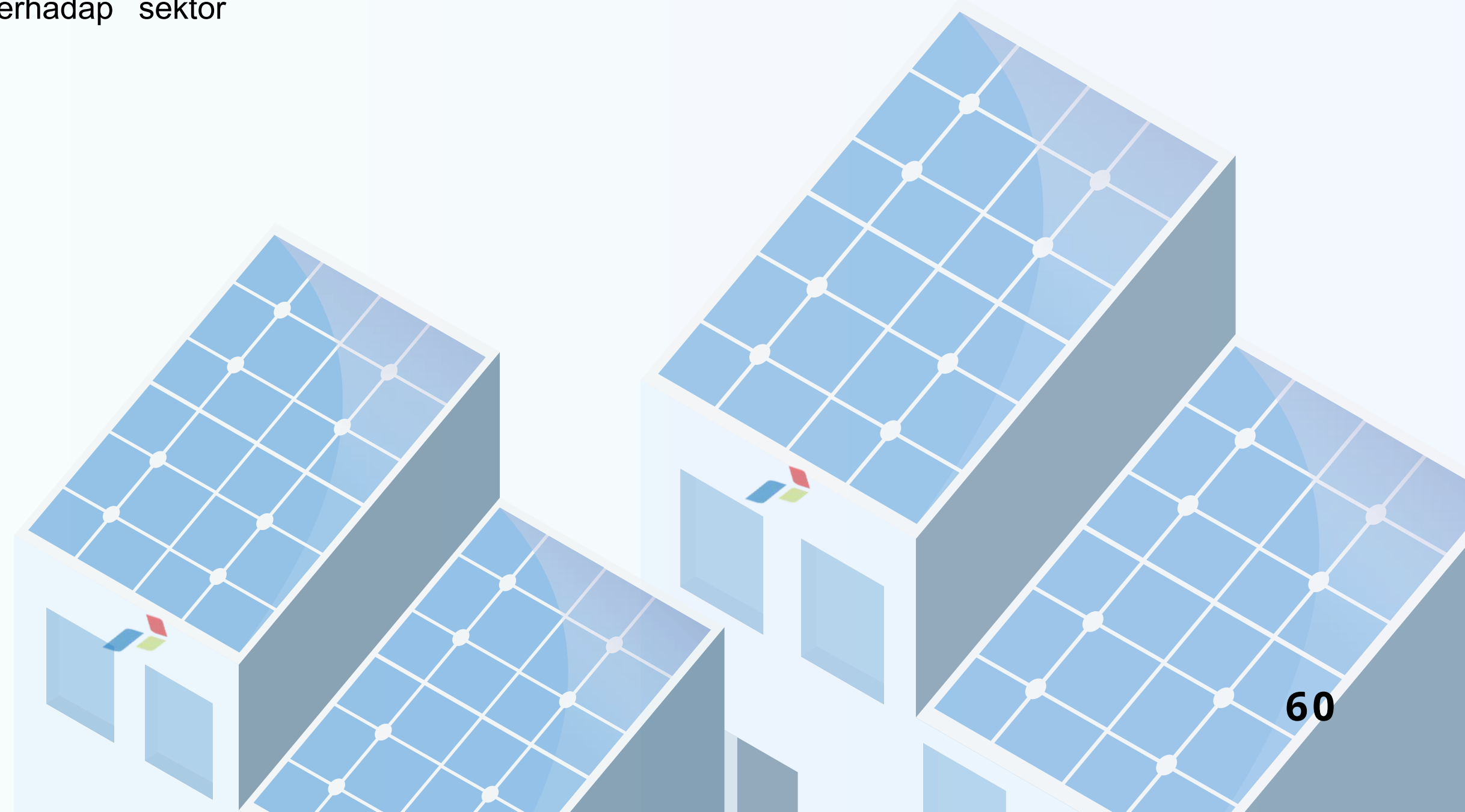
a. Tax Overview

Saka Energi Muriah Limited, a Pertamina Group entity based in the British Virgin Islands (BVI), successfully recorded a total revenue of \$27,806.95. The company achieved a pre-tax profit of \$5,919.06, indicating promising profitability amidst the energy industry dynamics. Notably, the company did not pay income taxes on a cash basis, which may reflect favorable tax policies in the BVI or practical tax arrangements.

With a stated capital of \$52,307.20 and negative retained earnings of \$(21,564.93), Saka Energi Muriah Limited demonstrates a complex yet solid financial structure. The company has tangible assets, excluding cash and cash equivalents, amounting to \$5,884.54, indicating a significant investment in physical infrastructure supporting its oil and gas operations.

Kinerja finansial yang dicapai oleh Saka Energi Muriah Limited menunjukkan kemampuan perusahaan dalam mengelola operasinya dengan efektif, meskipun menghadapi tantangan keuangan. Entitas ini memainkan peran kunci dalam jaringan global Pertamina dan memiliki potensi pertumbuhan di masa depan. Dengan investasi yang berkelanjutan, perusahaan diharapkan dapat memperbaiki kondisi keuangannya dan memberikan kontribusi yang lebih besar terhadap sektor energi.

The financial performance of Saka Energi Muriah Limited shows the company's ability to manage its operations effectively despite facing economic challenges. This entity plays a crucial role in Pertamina's global network and has growth potential in the future. With continued investment, the company is expected to improve its financial condition and contribute more significantly to the energy sector.



b. Data CbCR Virgin Island (British) Desember Tahun 2022
The CbCR Data of Virgin Island in December 2022

Data dalam ratusan juta dollar
Data in hundred million dollar

Name	Revenues - Unrelated Party	Revenues - Related Party	Revenues - Total	Profit (Loss) before Income Tax	Income Tax Paid (on a cash basis)	Income Tax Accrued - Current Year	Stated Capital	Accumulated Earnings	Number of Employees (Number)	Tangible Assets other than Cash and Cash Equivalents
Virgin Island (British)	27806.95	-	27806.95	5919.06	-	-	52307.2	-21564.93	-	5884.54
Entitas di Virgin Island (British)										
Saka Energi Muriah Limited	27806.95	-	27806.95	5919.06	-	-	52307.2	-21564.93	-	5884.54

Kurs Neraca: 12.441
per 1 Januari 2015

Berdasarkan Lampiran Peraturan Direktorat Jenderal Pajak Nomor 29/PJ/2017 tentang Tata Cara Pengelolaan laporan Per Negara

Exchange Rate: 12,441
as of January 1, 2015

According to the Appendix of the Directorate General of Taxes Regulation Number 29/PJ/2017 concerning the Procedures for Managing Country Reports

c. Aktivitas Bisnis Virgin Island (British)
Business Activities in Virgin Island (British)

Pertamina Group constituent entities	Residence tax jurisdiction	Business Activity
Saka Energi Muriah Limited	Virgin Island (British)	-